

Ink/Doctoring Cups Accessories



LASER MARKING PAD PRINTING CONSUMABLES SERVICE

For all standard pad printing machines
For single and multi-color pad printing
Accessories
Service offers





Ink/doctoring cups, 1-color
Available in plastic, aluminum, stainless steel

For our pad printing machines

Ink/Doctoring Cup, 1-color

Field of application

Our range of 1-color ink/doctoring cups is perfectly suited for all TAMPOPRINT "hermetic" pad printing machines and is available in three high-quality versions: aluminum, plastic and steel. Thanks to our wide range, we offer the suitable and optimized ink/doctoring cup for every application.

Advantages

- Selection from a wide range of ink/doctoring cups
- Various material versions available
- Available in all common system sizes
- Coordinated with the overall TAMPOPRINT® process

Service offers

Offer depending on ink/doctoring cup and degree of wear:

- **Mechanical re-lapping**
- **Replacement of carbide doctor blade lip,** sealing ring, doctor blade ring or ink/doctoring cup
- **Non-binding cost estimate:**
Send us your ink/doctoring cup for a free inspection and we will provide you with a non-binding cost estimate!

Print image sizes

Ink/doctoring cup Ø 40 mm: max. Ø 35 mm
Ink/doctoring cup Ø 50 mm: max. Ø 45 mm
Ink/doctoring cup Ø 60 mm: max. Ø 55 mm (SR* Ø 58 mm)
Ink/doctoring cup Ø 90 mm: max. Ø 85 mm (SR* Ø 88 mm)
Ink/doctoring cup Ø 130 mm: max. Ø 120 mm
Ink/doctoring cup Ø 140 mm: max. Ø 130 mm
Ink/doctoring cup Ø 150 mm: max. Ø 140 mm
Ink/doctoring cup Ø 210 mm: max. Ø 190 mm (SR^{II} Ø 200 mm)

* SR = Mirrored doctor blade lip, thus enlarged print image diameter by approx. 3 mm
(doctor blade lip beveled from inside to outside for enlarged print area)

Steel ink/doctoring cup for the ENCODER series

Printing possible in all positions thanks to bellows - even overhead!



Aluminum ink/doctoring cup

Universal ink/doctoring cup for standard applications



Ink/doctoring cup Cliplock Ø 130 & Ø 140

Adding ink made easy - thanks to the removable lid
Item No. 090038 & Item No. 090039

Plastic ink/doctoring cup Ø 60 & Ø 90 NE

Stable printing process due to increased viscosity stability

Overview of all ink/doctoring cups 1-color see page 23



Required accessories

Thrust collar multi-color Ø 60 mm	Item No.09 00 86
Ink/doctoring cup 2-color Ø 60 mm, steel	Item No.09 00 21
Gripping tongs Ø 60 mm	Item No.09 00 72**
Mounting table Ø 60 mm	Item No.09 00 62**

Thrust collar multi-color Ø 90 mm	Item No.09 01 27
Ink/doctoring cup 2-color Ø 90 mm, aluminum	Item No.09 00 58
Gripping tongs Ø 90 mm	Item No.09 01 40**
Mounting table Ø 90 mm	Item No.09 01 50**

** Scope of supply standard machine

2-color printing with a 1-color pad printing machine

Ink/Doctoring Cup, 2-Color

Field of application

Our 2-color ink/doctoring cups make it possible to print two print images in different colors next to each other in a single pass with a 1-color “hermetic” pad printing machine. This optimizes production processes for small, differently colored print images and shortens machine throughput times. Thanks to the high-quality workmanship of our ink/doctoring cups, you will always achieve first-class printing results. The doctor blade ring and doctor blade lip can be replaced in our factory when worn, so you can always count on maximum performance.

Advantages

- Two print images printable with 1-color printing machine
- Extended print image options and efficiency

Service offers

■ Ink/doctoring cup Ø 60 mm

Replacing the carbide doctor blade lip plus mechanical re-lapping

■ Ink/doctoring cup Ø 90 mm

Replacing the doctor blade ring and the carbide doctor blade lip plus mechanical re-lapping

If the carbide doctor blade lips are heavily worn (contact surface wider than 0.3 mm), we generally recommend replacing the doctor blade ring.

Print image sizes

Ink/doctoring cup Ø 60 mm: Print image size max. Ø 55 mm

Ink/doctoring cup Ø 90 mm: Print image size max. Ø 85 mm

Ink/doctoring cup Ø 130 mm: Print image size max. Ø 125 mm

Non-printing zone around the center bar approx. 5 mm



Ink/doctoring cup, 2-color

Simple installation possible without additional accessories



Bathroom fittings, 2-color

Two print images in different colors can be printed simultaneously with two different printing inks in one machine



Required accessories

Thrust collar multi-color Ø 60 mm

Item No.09 00 86

Ink/doctoring cup 3-color Ø 60 mm, Steel

Item No.09 00 22

Gripping tongs Ø 60 mm

Item No.09 00 72**

Mounting table Ø 60 mm

Item No.09 00 62**

** Scope of supply standard machine

3-color printing with a 1-color pad printing machine

Ink/Doctoring Cup, 3-Color

Field of application

The basic design and material of the 3-color Ø 60 mm ink/doctoring cup corresponds to the two-color Ø 60 mm ink/doctoring cup. However, the ink chambers are separated by two dividers. This means that 3 print images in different colors (next to each other) can be printed in one print pass with a 1-color pad printing machine. The doctor blade lip is a one-piece doctor blade ring with two separators. The ink is protected from leaking and the existing equipment for setting up the pad printing machine can be used.

Advantages

- Three print images printable with 1-color printing machine
- Extended print image options and efficiency

Service offers

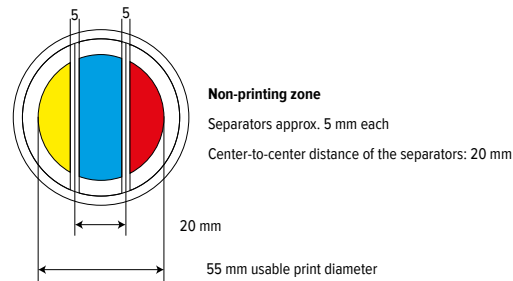
- Replacing the carbide doctor blade lip plus mechanical re-lapping

If the carbide doctor blade lips are heavily worn (contact surface wider than 0.3 mm), we generally recommend replacing the doctor blade ring.

Print image sizes

Ink/doctoring cup Ø 60 mm: Print image max. 3x15 mm

Non-printing zone around the separators approx. 5 mm



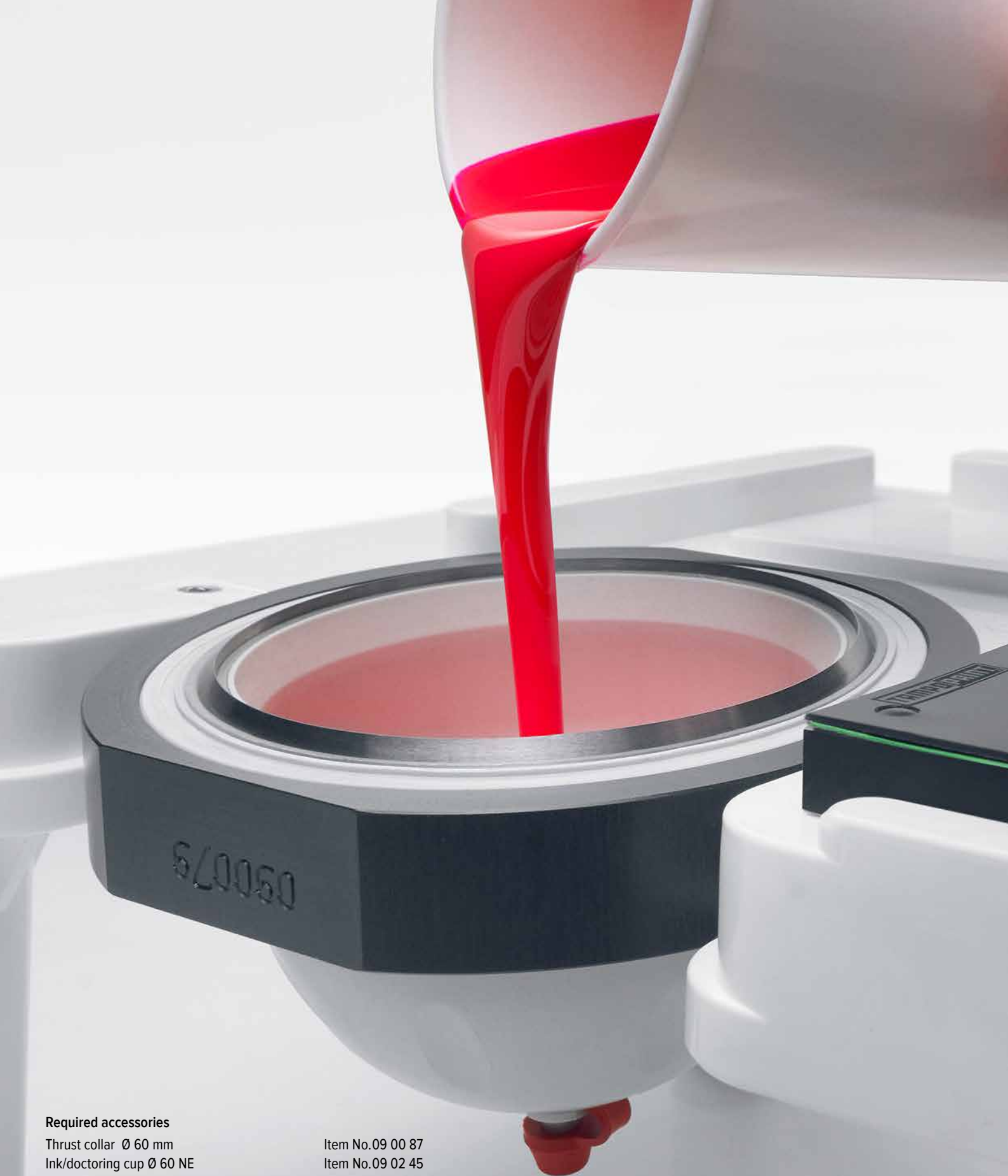
Ink/doctoring cup, 3-color

Can be mounted like a regular ink/doctoring cup easily and without additional accessories thanks to the compartments.



Bathroom fittings, 3-color

Three print images in different colors with three different printing inks can be printed simultaneously in one machine.



Required accessories

Thrust collar Ø 60 mm
Ink/doctoring cup Ø 60 NE
Gripping tongs Ø 60 mm
Mounting table Ø 60 mm

Item No.09 00 87
Item No.09 02 45
Item No.09 00 72**
Item No.09 00 62**

Thrust collar Ø 90 mm
Ink/doctoring cup Ø 90 NE
Gripping tongs Ø 90 mm
Mounting table Ø 90 mm

Item No.09 00 79
Item No.09 02 46
Item No.09 01 40**
Item No.09 01 50**

** Scope of supply standard machine

Sophisticated ventilation concept for greater viscosity stability

Ink/Doctoring Cup Ø 60 & 90 NE

Field of application

By using a plastic reinforced with glass fibers, the stiffness could be increased enormously. This improves the behavior during doctoring in particular. This effect is further enhanced by the design and the manufacturing process. The hemispherical shape enables easy cleaning.

The inside of the ink/doctoring cup has a fill level mark for 50 ml for ink/doctoring cup Ø 60 NE and 100 ml for ink/doctoring cup Ø 90 NE. In addition, the curved shape combined with the material offers increased rigidity. The sealing cap allows easy, tool-free opening and it is immediately apparent whether the ventilation of the ink/doctoring cup is open or closed.

Advantages

- Increased mechanical rigidity
- Durable material
- Better handling thanks to practical details
- Easy cleaning
- **Viscosity stability**

Service offers

- Mechanical re-lapping

Print image sizes

Ink/doctoring cup Ø 60 mm: Print image size max. Ø 55 mm

Ink/doctoring cup Ø 90 mm: Print image size max. Ø 85 mm



With ventilation concept for more viscosity stability



Easy cleaning and increased rigidity thanks to hemispherical shape



Required accessories

Thrust collar Ø 130 mm	Item No.09 00 80
Ink/doctoring cup ClipLock® Ø 130 mm	Item No.09 00 38
Gripping tongs Ø 130 mm	Item No.09 00 74**
Mounting table Ø 130 mm	Item No.09 00 64**
Glass stirring rod	Item No.09 01 69
Solvent pipette	Item No.09 01 75

Thrust collar Ø 140 mm	Item No.09 00 80
Ink/doctoring cup ClipLock® Ø 140 mm	Item No.09 00 39
Gripping tongs Ø 140 mm	Item No.09 00 74**
Mounting table Ø 140 mm	Item No.09 00 64**
Glass stirring rod	Item No.09 01 69
Solvent pipette	Item No.09 01 75

** Scope of supply standard machine

Refilling and checking the ink when installed

Ink/Doctoring Cup ClipLock®

Field of application

The ClipLock® ink/doctoring cup has been developed for use in MAP systems and the standard machine series for ink/doctoring cups with diameters of 130 mm and 140 mm. For optimum handling, we recommend using the ClipLock® lid tongs.

Thanks to the removable lid, the ClipLock® ink/doctoring cup enables direct ink access without removing the ink/doctoring cup from the machine. The ink can be mixed or thinned quickly and easily, ensuring that it can be used for a longer period of time. Incorrect operation when closing is prevented thanks to the user-friendly “clip” closure. Ink consumption is optimized, especially for smaller print motifs. Downtimes during production are also significantly reduced, which increases overall efficiency.

Advantages

- Direct access to the ink thanks to removable lid
- Shorter downtimes
- Ink remixing and dilution without retrofitting of the machine

Service offers

- Mechanical re-lapping*
- Non-binding cost estimate:
Send us your ink/doctoring cup for a free inspection and we will provide you with a non-binding quotation!

* Only possible if there is no damage to the doctor blade lip

Print image sizes

Ink/doctoring cup ClipLock® Ø 130 mm: max. Ø 120 mm

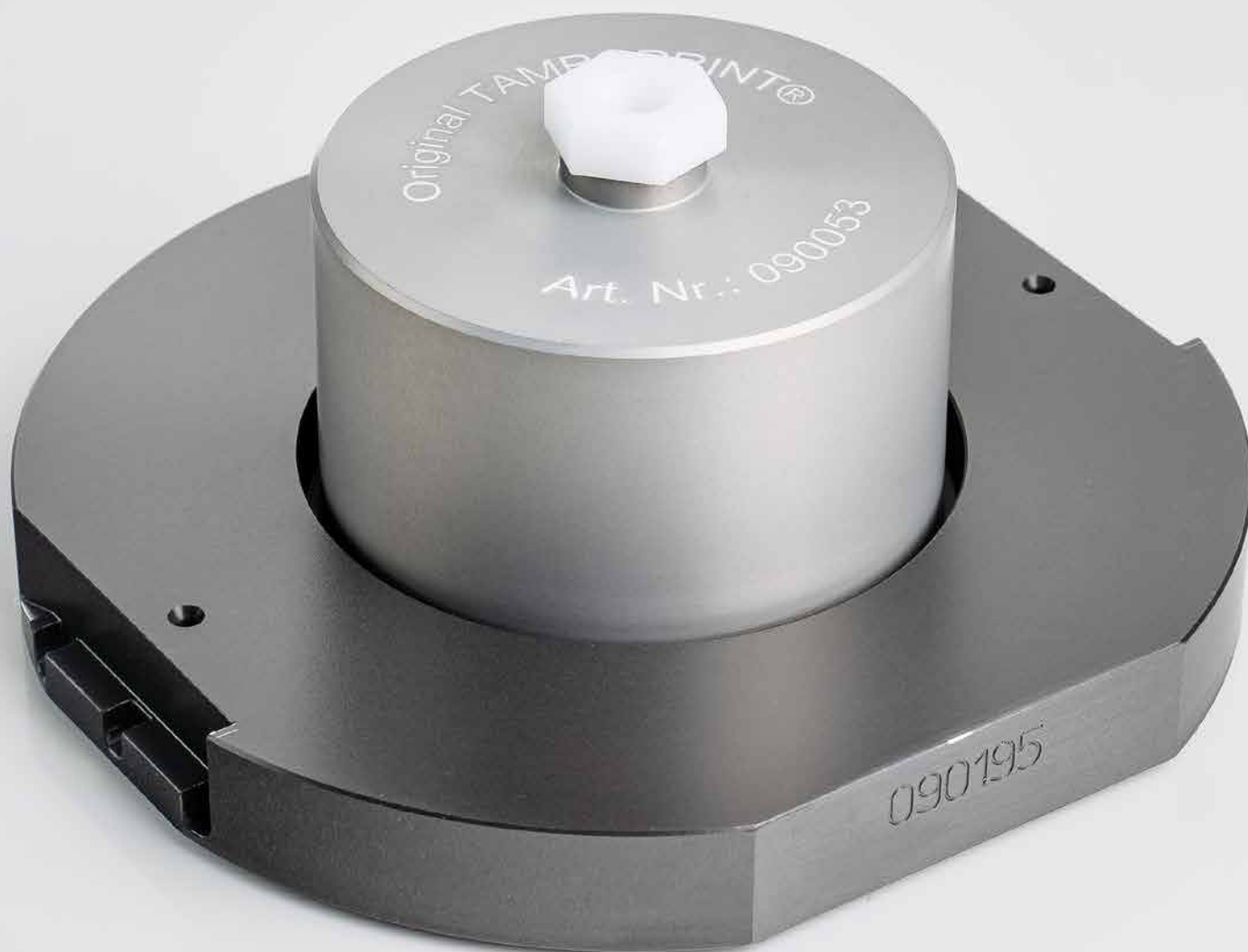
Ink/doctoring cup ClipLock® Ø 140 mm: max. Ø 130 mm



Minimal ink consumption, especially for smaller print motifs



Ink refill without removing the doctor blade cup for short downtimes



Required accessories

Thrust collar adapter Ø 60 mm	Item No.09 01 90
Ink/doctoring cup Ø 40 mm	Item No.09 00 02
Gripping tongs Ø 60 mm	Item No.09 00 72
Mounting table Ø 60 mm	Item No.09 00 62

Thrust collar adapter Ø 90 mm	Item No.09 01 37
Ink/doctoring cup Ø 60 mm	Item No.09 02 45
Gripping tongs Ø 90 mm	Item No.09 00 73**
Mounting table Ø 90 mm	Item No.09 00 63**

Thrust collar adapter Ø 130 mm for print image Ø 60 mm	Item No.09 01 96
Thrust collar adapter Ø 130 mm for print image Ø 90 mm	Item No.09 01 95
Ink/doctoring cup Ø 90 mm	
Ink/doctoring cup Ø 60 mm	Item No.09 02 45
Gripping tongs Ø 130 mm	Item No.xx xx xx
Mounting table Ø 130 mm	Item No.xx xx xx

Thrust collar adapter Ø 150 mm for print image Ø 60 mm	Item No.09 01 79
Thrust collar adapter Ø 150 mm for print image Ø 90 mm	Item No.09 01 80

** Scope of supply standard machine

For small print images in large machines

Thrust collar adapter

Field of application

The thrust collar adapter for TAMPOPRINT ink/doctoring cups has been specially developed for our standard pad printing machines. Existing equipment such as gripping tongs and mounting table can be used without any problems. Ideal for print images smaller than Ø 55 mm, the smaller ink/doctoring cup effectively reduces ink waste while ensuring an identical print image center to the ink/doctoring cups used for the specific pad printing machine. Your cliché size remains unchanged. The lower ink filling quantity significantly reduces the disposal costs for 2-component ink.

We also offer special solutions for deviating print image centers.

Advantages

- Minimal ink consumption with small print images
- Existing accessories can be used
- Unchanged cliché size
- Identical print image center with the ink/doctoring cups used for the specific pad printing machine

Print image sizes

Thrust collar adapter Ø 60 mm (ink/doctoring cup Ø 40 mm): 35*
Thrust collar adapter Ø 90 mm (ink/doctoring cup Ø 60 mm): 55*
Thrust collar adapter Ø 130 mm (ink/doctoring cup Ø 60 mm): 55*
Thrust collar adapter Ø 130 mm (ink/doctoring cup Ø 90 mm): 85*
Thrust collar adapter Ø 150 mm (ink/doctoring cup Ø 60 mm): 55*
Thrust collar adapter Ø 150 mm (ink/doctoring cup Ø 90 mm): 85*

* max. Ø (in mm)



Thrust collar adapter ink/doctoring cup Ø 130 mm to ink/doctoring cup Ø 90 mm

Reduces ink consumption for small print images



All about pad printing

Service Offers

Service offer

We offer comprehensive service and maintenance packages to support you even after your purchase.

Depending on the ink/doctoring cup and degree of wear, we offer a variety of repair service options. Send us your ink/doctoring cup and leave the rest to us. We take care of the mechanical re-lapping and replacement of carbide doctor blade lips, sealing rings and doctor rings for you. Send us your ink/doctoring cup for a free inspection and we will provide you with a non-binding quote!

Advantages

- Advice from experts with many years of experience
- Highest quality control
- In-house repair for sustainable production
- Tools and spare parts available for DIY repairs

If you would like to repair the ink/doctoring cup yourself, you can find the right tools and spare parts in our online store. Visit us at: <https://catalog.tampoprint.de/>

Individual repair

Professional repair by hand for each individual case



Professional advice

We help you choose the right ink/doctoring cup



Lapping

We repair and lap your ink/doctoring cups - for sustainable and more cost-effective production

Inspection

We make sure that your new carbide doctor blade lip works perfectly

COMPLETE SUPPORT

ACCESSORIES

Our accessories are perfectly designed for the interaction of all TAMPOPRINT components in the pad printing process.



Our consumables - For optimum printing results

Original TAMPOPRINT® Accessories

Pad printing accessories for optimum printing results

In addition to machines and consumables, we also provide you with the right process accessories. Thanks to our many years of experience and process expertise, we know how essential it is for all process components to work in perfect harmony in order to achieve ideal printing results. These useful tools support the process, make your work easier and help you achieve high-quality printing results.

Advantages

- Fast, effective and clean work
- Perfectly matched to the pad printing process
- For every pad printing system
- For optimum printing results
- Large and versatile selection for beginners and professionals

Accessories and much more can be found in our TAMPOPRINT® online catalog. Take a look!

Auxiliaries

Practical tools for the pad printing process



100 % process ownership

Perfectly matched kit for positioning printed parts



Large selection of pad printing inks

Brilliant colors for even the most unusual applications



Individual parts for DIY repair

Further individual parts, such as doctor rings, available for DIY repairs



Overview

Standard Ink/Doctoring Cups

Note for your repeat order: The item number is engraved on the top of the ink/doctoring cup.

1-color standard ink/doctoring cups

Ink/ doctoring cup	Steel	Steel Bellows	Steel with plastic piston + sealing ring	Aluminum carbide doctor blade ring	Aluminum ceramic doctor ring	Plastic carbide doctor blade ring ¹⁾	Plastic ceramic doctor ring ²⁾	Ink/doc- toring cup ClipLock [®]	Thrust collar 1-color	Thrust collar adapter
Ø mm	Item No.	Item No.	Item No.	Item No.	Item No.	Item No.	Item No.	Item No.	Item No.	Item No.
Ø 30	09 00 01	—	—	—	—	—	—	—	—	—
ENCODER	Ø 40	09 00 02 09 00 13 Height 39 mm	09 00 04 (Pneumatic sup- ply at the top) 09 00 06 (Pneumatic supply on side) 090010 (Overhead version)	—	—	—	—	—	09 00 81	—
	Ø 60	09 00 03	09 00 05 (Pneumatic sup- ply at the top) 09 00 07 (Pneumatic supply on side)	09 00 17	—	—	—	—	09 00 82	—
	Ø 60	—	—	—	09 00 20 09 00 52 ²⁾	09 02 32 ²⁾	09 02 45 ²⁾	09 00 32 ²⁾	09 02 41 09 02 43	09 00 87 09 01 90
	Ø 60 SR ³⁾	—	—	—	—	—	09 00 40 ²⁾	—	—	09 00 87 —
	Ø 90	—	—	—	09 00 30 09 00 53 ²⁾	09 02 33 ²⁾	09 02 46 ²⁾	—	09 01 30	09 00 84 09 01 37
	Ø 90 SR ³⁾	—	—	—	—	—	09 00 41 ²⁾	—	—	09 00 79 —
	Ø 130	—	—	—	09 00 50 09 00 51 ²⁾	—	—	—	09 00 38	09 00 85 09 01 95 09 01 96
	Ø 140	—	—	—	09 00 54 ²⁾	09 02 44 ²⁾	—	—	09 00 39	09 00 77 —
	Ø 150	—	—	—	09 00 55 ²⁾	09 02 36	—	—	—	09 00 78 09 01 79 09 01 80
	Ø 210	—	—	—	09 00 57 ²⁾	—	—	—	—	09 01 26 —
	Ø 210 SR ³⁾	—	—	—	09 00 49 ²⁾	—	—	—	—	09 01 26 —

2-color standard ink/doctoring cups

Ink/doctoring cup	Steel	Aluminum	Thrust collar 2-color
Ø mm	Item No.	Item No.	
Ø 30	—	—	09 01 35
Ø 60	09 00 21	—	09 01 29 09 00 03 ^{Steel} 09 01 36
Ø 90	—	09 00 58	09 01 39 ^{Plastic}
Ø 130	—	09 00 59	09 01 48
Ø 150	—	—	09 01 38 2 ink/doctoring cups D=60
Ø 210	—	—	09 01 39 2 ink/doctoring cups D = 90

Matching accessories: gripping tongs & mounting table 2-color available

3-color standard ink/doctoring cups

Ink/doctoring cup	Steel	Thrust collar 3-color
Ø mm	Item No.	
Ø 60	09 00 22 09 00 56*	—
Ø 130	—	09 09 23 3 ink/doctoring cups D = 30
Ø 210	—	09 01 34 3 ink/doctoring cups D = 60

* asymmetrical

1) SR = doctor blade lip mirrored, thus enlarged print image Ø approx. 3 mm (doctor blade lip beveled from inside to outside for enlarged printing area)

2) 30° – beveled thrust collar contact surface

3) Preferred cliché types: Steel, ceramic, Aloxid-special, Magnet-Aloxid, record special cliché

4) Preferred cliché types: Aloxid cliché, Magnet-screen cliché



technologies for your future

TAMPOPRINT® GmbH
Lingwiesenstraße 1
70825 Korntal-Münchingen
GERMANY

Tel. +49 7150 928-0
Fax +49 7150 928-400

info@tampoprint.de
www.tampoprint.com

TAMPOPRINT® IBERIA S.A.U.
Polígono Industrial Martorelles
C/ Sant Martí, s/n (entre Gorgs y Mogent)
08107 Martorelles (Barcelona), SPAIN

Tel. +34 93 2327161
Fax +34 93 2471500

tampoprint@tampoprint.es
www.tampoprint.com

TAMPOPRINT® INTERNATIONAL CORP.
1400 26th Street, Vero Beach
FL 32960
USA

Tel. +1 772 778-8896, 800 810-8896
Fax +1 772 778-8289

info@tampoprint.com
www.tampoprint.com



The reproduction of trademarks and brands used in this brochure, even if not explicitly expressed, does not justify the assumption that such names or symbols may be considered as free as defined by the Trademark Act and may therefore freely be used. The rights are the property of the respective owner. TAMPOPRINT products are permanently updated to keep pace with the latest technological developments. For this reason, figures and descriptions are non-binding. Our machines are manufactured based on the currently valid European Machinery Directives as well as the European product standards EN 1010-1 and EN 1010-2.

Copyright © TAMPOPRINT GmbH. Subject to technical changes and other modifications.

All locations are certified ISO 9001:2015

01/2025