

## PC Express Color Matching

Wilflex™ Epic PC Express color mixing system is an easy-to-use, easy-to-mix color mixing system with 15 intermixable pigment concentrates and a variety of mixing bases. Epic PC Express color matching will enable printers to produce PANTONE® simulations. Inks made with Epic PC Express are suitable for high production, wet-on-wet printing, offering a matte finish and excellent crock resistance.

### Highlights

- ▶ Soft hand prints.
- ▶ Matte finish.
- ▶ Can be mixed with Epic Texture bases to make vibrant texture prints. Developed to be printed wet-on-wet at high production speeds with exceptional resistance to build-up.
- ▶ 25 Pigment Concentrates and Epic Mixing Base
  - ▶ 61011PC Epic Extra White PC
  - ▶ 61040PC Epic Red PC
  - ▶ 61045PC Epic Maroon PC
  - ▶ 61047PC Epic Magenta PC
  - ▶ 61057PC Epic Violet PC
  - ▶ 61068PC Epic Blue PC
  - ▶ 61070PC Epic Green PC
  - ▶ 61083PC Epic Blaze Gold PC
  - ▶ 61085PC Epic Ultra Gold PC
  - ▶ 61087PC Epic Bright Yellow PC
  - ▶ 61094PC Epic Velvet Black PC
  - ▶ 61130PC Epic Bright Orange PC
  - ▶ 61145PC Epic Red B/S PCNM PC
  - ▶ 61160PC Epic Bright Blue PC
  - ▶ 61165PC Epic Marine Blue PC
  - ▶ 61187PC Epic Yellow PCNM PC
  - ▶ 61800PC Epic Electron Yellow PC
  - ▶ 61801PC Epic Electron Blue PC
  - ▶ 61802PC Epic Electron Green PC
  - ▶ 61803PC Epic Electron Orange PC
  - ▶ 61806PC Epic Electron Red PC
  - ▶ 61904PC Epic Fluo. Pink PC
  - ▶ 61905PC Epic Fluo Neon PC
  - ▶ 61907PC Epic Fluo Magenta PC
  - ▶ 61908PC Epic Fluo. Purple PC

### Printing Tips

- ▶ When blended according to formulations, colors will vary in opacity from translucent to semi-opaque.
- ▶ Colors will reproduce best on white or light grounds.
- ▶ For cotton fabrics, underbase with 11335PFW Epic Sprint White. For bleed resistance, use an underbase white such as 11835PFW Epic Quick White, 11117PFW Epic Polywhite, or 11195PFW Epic Athletic LB White.

### Compliance

- ▶ Non-phthalate.
- ▶ For individual compliance certifications, please visit [www.wilflex.com/compliance](http://www.wilflex.com/compliance).

### Precautions

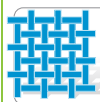
- ▶ Perform fusion tests before production. Failure to cure ink properly may result in poor wash fastness, inferior adhesion and unacceptable durability. Ink gel and cure temperatures should be measured using a Thermoprobe placed directly in the wet ink film and verified on the production run substrate(s) and production equipment. It is the responsibility of the printer to determine that the correct ink has been selected for a specific substrate and the application processes meet your customer's standards or specifications.
- ▶ When formulating custom formulas use Wilflex Ink Room Management Software to ensure formulas are balanced for optimal print, wash and cure performance.
- ▶ For consistency, all formulas provided were printed through 156 t/in (62 t/cm) mesh screen on white, 100% cotton fabric for color approval. Wilflex Epic PC Express inks can, however, be printed through a range of meshes between 110-305 t/in (43-120 t/cm). Variation in screen mesh and ink deposit can result in variation in depth of color and opacity.
- ▶ Reducing viscosity will adversely affect opacity.
- ▶ Avoid over flashing as it can result in poor intercoat adhesion of colors.
- ▶ Stir plastisols before printing.
- ▶ Do not dry clean, bleach or iron printed area.
- ▶ **NON-CONTAMINATION OF EPIC INKS:** Do not add or mix non-Epic inks, additives or extenders with Epic inks. All buckets, palette knives, stirring apparatus, squeegees, flood bars and screens must be cleaned properly and free of phthalates and pvc containing inks. Non-phthalate emulsions and pallet adhesives must be used. Failure to follow these precautions may cause phthalate contamination in violation of consumer protection laws and regulations.
- ▶ Any application not referred in this product information bulletin should be pre-tested or consultation sought with Wilflex Technical Services Department prior to printing.
- ▶ Email: [techserviceswilflex@polyone.com](mailto:techserviceswilflex@polyone.com)

## Recommended Parameters



### Fabric Types

100% cotton, cotton blends, some synthetics



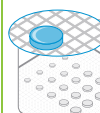
### Mesh

Counts: 110-305 t/in (43-120 t/cm)  
Tension: 25-35 n/cm²



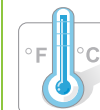
### Squeegee

Durometer: 60-80, 70/90, 70/90/70  
Edge: Sharp  
Stroke: Fast  
*\*Do not use excess squeegee pressure.*



### Non-Phthalate Stencil

Direct: 2 over 2  
Capillary/Thick Film: N/A  
Off Contact: 1/16" (.2cm)



### Flash & Cure Temperatures

Flash: 160°F (70°C)  
Cure: 300°F (150°C)



### Pigment Loading

EQ: N/A  
MX: N/A  
PC: Use IMS System.  
*\*All percentages listed at % by weight.*



### Epic Additives

Extender: Epic Extender Base-10% max  
Reducer: Epic Viscosity Buster-3% max  
*\*All percentages listed at % by weight.*



### Storage

65-90°F (18-32°C)  
Avoid direct sunlight.  
Use within one year of receipt.



### Clean Up

Ink degradant or press wash.



### Health & Safety

MSDS: [www.polyone.com](http://www.polyone.com) or  
Contact your local CSR.