



ENG



Designed and Manufactured 100% in Italy

Complete Brochure



Textile Drying Solutions

Screen Printing

DTG Printing

Textile Accessories



In 2020 Chiossi e Cavazzuti celebrates 41 years of history of manufacturing industrial machinery.

The technological experience acquired over the years is closely linked to its manufacturing and distribution activities.

Chiossi e Cavazzuti drying systems guarantee low consumption and high quality during the heat treatment process.

The objectives of quality and reliability have been constantly maintained, creating functional products, designed in accordance with the latest safety standards and the specific needs of each Customer.

Even today technical assistance is carried out on machinery produced more than 30 years ago, witnessing its structural strength and longevity.



Table of Contents

Dryers for DTG Printing

| | |
|-------------------------------|----|
| <i>Tetris Dryers</i> | 04 |
| <i>Tetris Features</i> | 07 |
| <i>Dido Pro and Dido Shop</i> | 08 |
| <i>Gas Dryers Griff</i> | 10 |



Dryers for Screen Printing

| | |
|------------------------------|----|
| <i>Gas Dryers Fahrenheit</i> | 12 |
| <i>Noir Dryers</i> | 14 |
| <i>Piccolo</i> | 16 |
| <i>Micro</i> | 18 |



Intermediate Flash Cures

| | |
|--------------------------------|----|
| <i>Yo-Yo, Spot Easy, Magic</i> | 20 |
|--------------------------------|----|



Accessories for Textile

| | |
|----------------------------------|----|
| <i>Folding Machine Speedy-T</i> | 22 |
| <i>Printing Pallets Alluplan</i> | 24 |



About Us

| | |
|-------------------------------|----|
| <i>History of the Company</i> | 26 |
|-------------------------------|----|





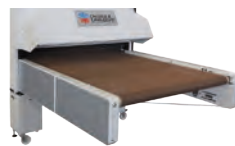
Hot Air

Modular Electric Dryers with Forced Hot Air Specifically designed for DTG, built to suit your needs



Optionals

- Inlet and outlet extensions
- Outlet cooling hood
- Entrance with IR flash module
- Tunnel height increased to 250mm
- External plug



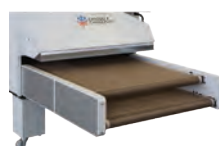
• Single conveyor belt

Basic configuration



• Double conveyor belt

Cure with different time simultaneously
Available for 1900 models



• Returning conveyor belt

Load and unload in the same position
Available on all models



Hot Air



DTG
Printing



Screen
Printing



Pad
Printing



Embroidery
Gauze

Main Application: DTG Digital Printing - Industrial production

Configurations

Heating Chamber Length: 2000 - 4000 - 6000 - 8000 mm

Conveyor Belt Width: 600 - 950 - 1200 - 1900 mm

Ace 600

Tunnel length: 2000 mm
Belt width: 600 mm
Max Power: 9,5 kW
Production: 80 pieces/h



Ace 950

Tunnel length: 2000 mm
Belt width: 950 mm
Max Power: 14 kW
Production: 160 pieces/h

Dual 1200

Tunnel length: 2000 mm
Belt width: 1200 mm
Max Power: 19 kW
Production: 240 pieces/h



Tandem 950

Tunnel length: 4000 mm
Belt width: 950 mm
Max Power: 28 kW
Production: 320 pieces/h

Poker 1200

Tunnel length: 4000 mm
Belt width: 1200 mm
Max Power: 39 kW
Production: 480 pieces/h



Poker 1900

Tunnel length: 4000 mm
Belt width: 1900 mm
Max Power: 57 kW
Production: 640 pieces/h

Other configurations and models are available

| TECHNICAL DATA | ACE 600 | ACE 950 | DUAL 1200 | DUAL 1900 | TANDEM 950 | POKER 1200 | POKER 1900 |
|---|---------------------------------------|------------------------|------------------------|------------------------|----------------------------------|------------------------|------------------------|
| Electrical Requirements | 400V 3P+PE (208V/230V 3P+PE optional) | | | | | | |
| Power Consumption ¹ | 9,5 kW-15A | 14 kW - 20A | 19 kW - 29A | 28 kW - 42A | 28 kW - 42A | 39 kW -59A | 57 kW - 90A |
| Max Temperature | 180°C | | | | | | |
| Exhaust Specification | 180 m ³ /h - Ø 150 mm | | | | 360 m ³ /h - Ø 200 mm | | |
| Tunnel Length | 2000 mm | | | | 4000 mm | | |
| Belt Width [mm] | 600 | 950 | 1200 | 1900 | 950 | 1200 | 1900 |
| Production ^{2,3} (light-dark) | 80 - 50 pieces/h | 160-100 pieces/h | 240-160 pieces/h | 320 - 200 pieces/h | 320-200 pieces/h | 480 - 320 pieces/h | 640-400 pieces/h |
| Dimension ⁴ (LxWxH) [mm] | 3800 x 890 x h2250 | 3800 x 1250 x h2250 | 4100 x 1500 x h2250 | 4100 x 2200 x h2250 | 5800 x 1250 x h2250 | 6100 x 1500 x h2250 | 6100 x 2200 x h2250 |
| Shipping Weight ⁴ | 440 kg | 650 kg | 780 kg | 1000 kg | 1000 kg | 1800 kG | 2200 kg |

¹ Max Power consumption during first heating cycle. Working consumption is about 60% of max value, depending on environmental conditions.

² Production of L size T-shirts with A4 size DTG print - 4 minutes curing time for light garments - 6 minutes curing time for dark garments.

³ Production data consider the loading side by side of 1 product for 600mm belt, 2 for 950mm, 3 for 1200mm and 4 for 1900mm belt.

⁴ Dimension and Weight can change accordingly to inlet/outlet extensions or installed optionals.

Features and Advantages

“Tetris” is a modular platform of electric tunnel Dryers with forced hot air.

- **Specifically designed to cure and dry digital printing on fabrics**, the massive advantage of this Dryer is the high volume of forced air circulation: this facilitates and accelerates the evaporation of water-based digital inks with unmatched results on the finished garment in medium-long drying process.
- **In the heat chamber the temperature is uniform and constant on both sides and the center**, adjusted by precise thermostats and long lasting static relays, one for each heating module zone. In this manner the temperature never exceeds the set value, preventing damage even to the most delicate fabrics.
- **The air exchange is adjusted to discharge steam and promote high volume air circulation.** This enhanced airflow convection system is designed on purpose and employs high yield low noise reverse blades. Outflow nozzles direct the air onto the product perpendicularly and at high speed. Filters on each blower fan achieve an efficient and low maintenance working process.

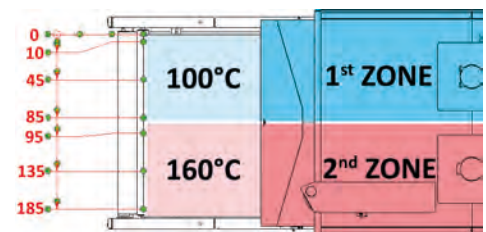
New Dual and Poker 1900 BIZONE

- Temperature: up to 180°C in each zone
- Independent belt speed and temperature control
- Drying area: 2000 or 4000 × (950+950)mm
- Cure 2 different products simultaneously



Independent Heating Modules

The TETRIS 1900 platform has been divided in two independent 950 modules: each one has a dedicated temperature probe, a solid state relay (SSR) that controls the power to the heating resistor and a temperature controller that commands the relay according to the setpoint and the temperature measured by the probe in real time.



Optionals for all Tetris Dryers

Tunnel Height increased

- cure objects or thick garments
- adjust height between 100-250mm



Cooling Hood and Socket

- quickly cool down cured products
- directly Plug-In your equipment



Entrance with IR Flash Module

- quickly heat to desired temperature
- speed up the production





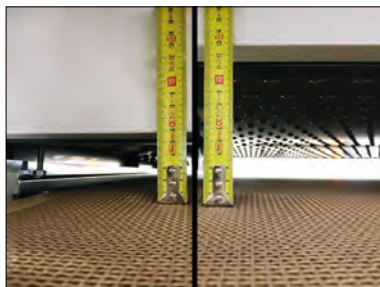
PLC colored touchscreen

The control panel has an easy and interactive interface design: Speed, Time and Temperature control are processed digitally for precise and fast adjustments. The automatic cooling off and shutdown can be set on demand to suit different working necessities; dryer technical parameters, real-time energy consumption and alarm notifications are clearly displayed.



Fumes extractor with metallic filter

The air exchange is adjusted to discharge steam and promote the highest volume of air circulation. The dedicated motor is activated automatically when needed and can be adjusted by the PLC to set the best fumes extraction/heating management ratio. The metallic mesh filter ensures the efficiency of the system, minimizing waste and pollution in the environment.



Variable tunnel height

Rotate the Handwheel to raise or lower the working height between 20 and 130mm, in order to cure thick garments and objects and achieve a direct jet of air.



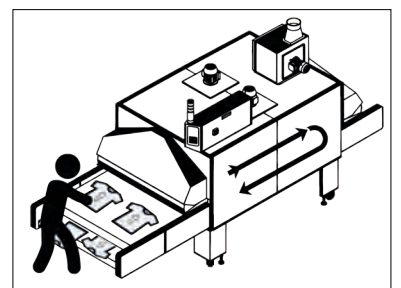
Hood shutter and fumes valve

Both the entry and exit of the Tunnel are provided with fumes hoods with adjustable shutter and fumes valve.



Returning lower belt

Double belt system to load and unload from the same position: the lower belt returns the cured products, reducing overall size and operator movements.



Centering belt device

The automatic centering device ensure that the belt stays on track without any manual adjustments.



Removable inspection panels

Every lateral panel is removable to speed up maintenance operations and easily reach the filters.



Castors and adjustable feet

Move the Dryer anywhere thanks to heavy duty casters with brakes. Level it on any surface adjusting the threaded feet.



Hot Air

DiDo PRO 6 Drawers

230V - 400V
three phase

DiDo Shop 3 Drawers

230V single phase

vertical jet of
air toward
each drawer

colored touchscreen with
interactive interface

exhaust fumes
extractor



drawers indicator lights
and sound alarm

solid rail-drawer
structure and
magnetic closure

effective air ventilation filter
no need to replace

Features

“DIDO” is the ideal solution for shops thanks to low consumption and compact size.

- DIDO (Digital Drawers Oven) is designed to dry water-based ink for any kind of Direct-To-Garment Printer.
- DIDO Shop is powered by 230V single phase while DIDO PRO by 400V or 230V three phases only.
- It works very well with medium-long drying process thanks to the control of the temperature and its efficient air circulation: for this reason it's perfect for fine fabrics like lycra, wool, silk and flocked garments.
- Ideal for small factories, laboratories and shops thanks to its reduced dimensions and low consumption.
- Hourly production is approximately 60 garments (30 for DIDO Shop) with 5-6 minutes per drawer.
- Suitable for any type of DTG printer, the maximum working temperature is 180°C.
- The air is warmed by electrical heating elements and blown in a vertical convection current in order to be uniform everywhere.
- The filteres keeps the fan and the conduct clean, improving the efficiency and power consumption,
- Each drawer is independent with its own timer, indicator light, sound alarm and magnetic closure.
- DIDO is equipped with a colored touchscreen interface, easy and interactive to use, with important new features such as timers, temperature, air ventilation and fumes extraction adjustments, job recall, scheduled heating-on and automatic switch-off of the dryer to minimize operator downtime.



Hot Air



DTG
Printing

Main Application: DTG Digital Printing - Entry level



Dido Pro with 6 open drawers

Advantages

- easy and interactive interface
- automatic scheduled start
- safe cooling off and sleep mode
- precise temperature control
- each drawer has its own timer
- drying process indicator light and alarm
- low consumption ideal for small business
- compact and lightweight structure
- unique and uniform air ventilation
- no need for filter replacements
- equipped with exhaust fumes extractor



Dido Pro PLC Interface



Dido Shop with T-shirt



Dido Shop PLC Interface

| TECHNICAL DATA | DIDO PRO | DIDO Shop |
|--------------------------------------|--------------------------------------|----------------------|
| Electrical Requirements | 400V 3P+N+PE 16 A 230V 3P+PE 26 A | 230V 1P+N+PE 16 A |
| Power Consumption (max) | 9,3 kw | 3,7 kw |
| Exhaust Specification | 40 m ³ /h Ø 80 mm | |
| Max Temperature | 180°C | |
| Drawer Size [mm] | 700 x 680 x h90 | |
| Production ¹ (light-dark) | 90-60 pieces/h | 45-30 pieces/h |
| Dimension (LxWxH) [mm] | 1185 x 835 x h1665 | 1185 x 835 x h1310 |
| Shipping Weight | 300 kg | 210 kg |

¹ Max consumption during first heating cycle. Working consumption is about 60% of max value, depending on environmental conditions.

² Production of t-shirts with A4 print size: 4 minutes curing time for light garments - 6 minutes curing time for dark garment.

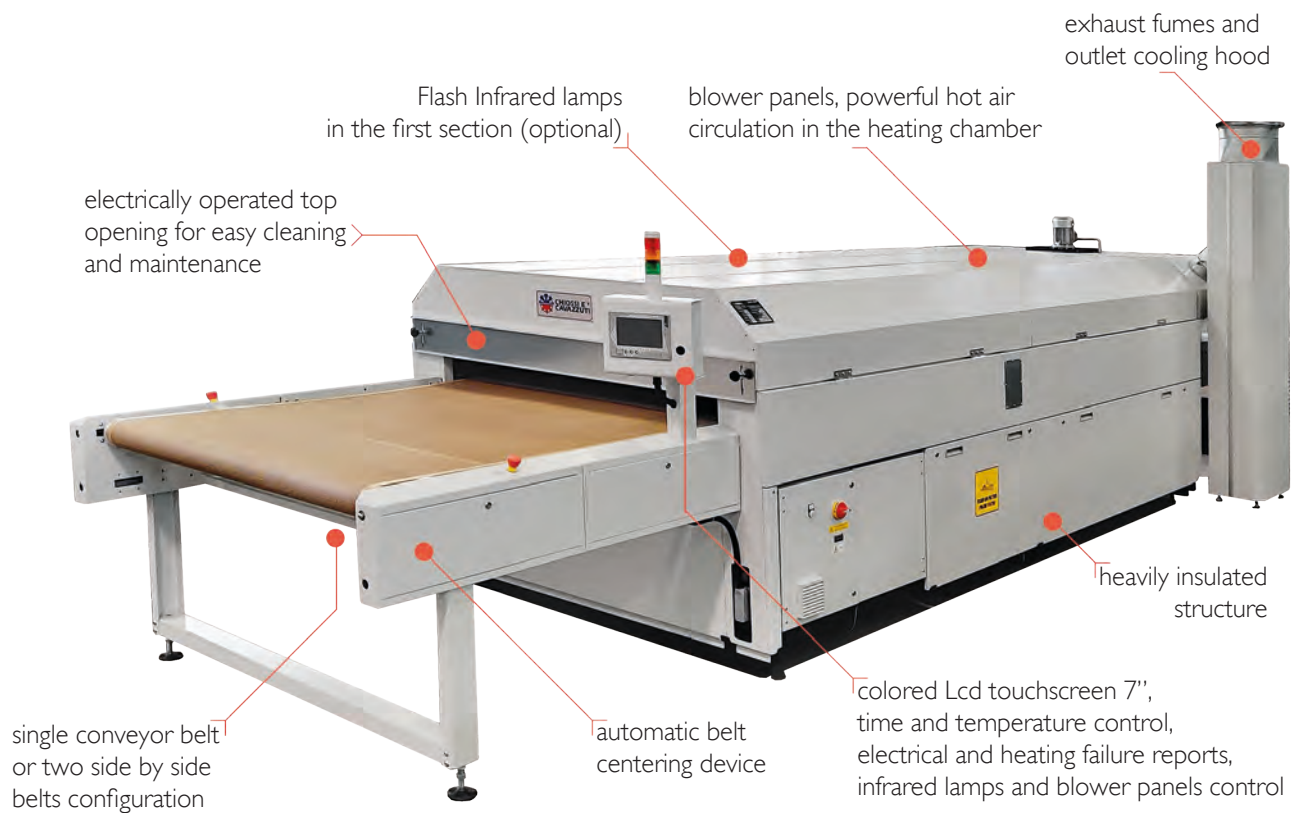


Hot Air



Infra Red
(Optional)

Gas Dryers with powerful Forced Hot Air



Features

“Griff” is the tunnel dryer with the highest air circulation of its kind.

- It is designed for Dtg and Screen Printing, to cure fabrics printed with water-based or Plastisol inks.
- The hot air circulation is particularly accurate and use reversed blade fans, with high efficiency and low noise.
- The air exchange is calibrated to expel water vapor and combustion fumes and facilitate drying.
- The outflow nozzles send the air onto the product in a perpendicular and high speed way.
- The temperature is regulated by a precision thermostat that drives a modulating premixed burner.
- The flame is always present and its intensity varies in function of power demand.
- The passage height is 130 mm, sufficient for the vast majority of products.
- The two independent belt speeds version can dry simultaneously two products with different drying time.
- It is possible to lift the upper section electronically to easily perform the internal cleaning of the dryer.

Optionals

- Inlet and outlet extensions
- IR heating with flash lamps in the first meter of the heating chamber



Hot Air



Infra Red
(Optional)



DTG
Printing



Screen
Printing

Main Application: DTG Digital Printing & Screen Printing - Mass production



Griff PLC interface

New Configurations

Tunnel Length: 4000 - 6000 - 8000 mm

Belt Width: 1400 - 1750 - 2x800 mm



Infrared Lamps and upper section opening

Advantages

- new interactive interface
- optional combined drying system
- highest speed of hot air circulation
- powerful airflow specifically designed for DTG
- precise time and temperature control
- low consumption and efficient burner
 - optional flash infrared lamps
- easy maintenance operations



Single belt configuration



Exhaust fumes and outlet cooling hood

Other models and configurations are available

| TECHNICAL DATA | GRIFF 4140 | GRIFF 4180 | GRIFF 6180 | GRIFF 8180 |
|--------------------------------------|--------------------|--|--------------------|--|
| Electrical Requirements | | 400V 3P+N+PE 4,8A 208V / 230V 3P+PE 16A | | 400V 3P+N+PE 5,1A 208V / 230V 3P+PE 18A |
| Exhaust Specification | | 1500 m ³ /h Ø 300 mm | | 2 x 1500 m ³ /h Ø 300mm |
| Max Temperature | | 180°C | | |
| Power Consumption | | 3,4 kw | | 5 kw |
| Burner Power | | 40 kw | | 2 x 40kw |
| Belt Width [mm] | 1400 | | 1750 or 2x800 | |
| Tunnel Length [mm] | | 4000 | 6000 | 8000 |
| Production ¹ (light-dark) | 480-320 pieces/h | 640-420 pieces/h | 940-470 pieces/h | 1000+ pieces/h |
| Dimension ² (LxVxH)[mm] | 6980 x 2150 x 2100 | 6980 x 2475 x 2100 | 8980 x 2475 x 2100 | 10980 x 2475 x 2100 |
| Shipping Weight | 1800 kg | 2000 kg | 2500 kg | 4000 kg |

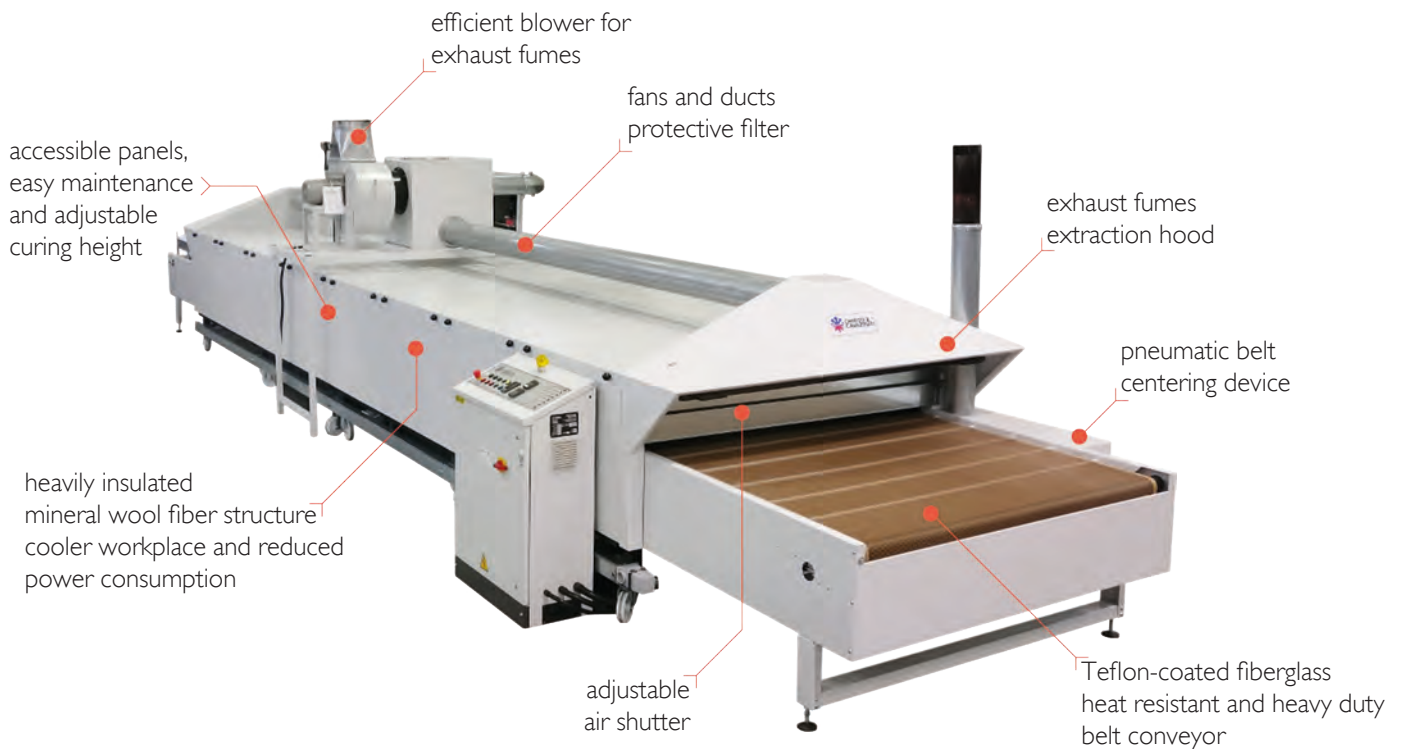
¹ Production of T-shirts with A4 size DTG print - 4 minutes curing time for light garments - 6 minutes curing time for dark garments.

² Dimension and Weight can change accordingly to inlet/outlet extensions or installed options.



Hot Air

Electric or Gas Modular Dryers



Features

“Fahrenheit” is designed to dry any kind of ink from 100°C up to a maximum of 180°C.

- Available in various sizes, this dryer forms a modular structure to adapt to every production requirements.
- Provided with an extractor fan and hood located at both sides of the dryer for the expulsion of fumes and vapors of the process.
- Equipped with internal diagnostics to detect malfunctioning and faults, if any.
- Height adjustment of the hot air emission surfaces from 50 to 140 mm.
- Forced air recirculation system designed to make the preset temperature uniform.
- Protective filters to keep the fans and ducts clean and ensure efficiency over time.
- Provided with pneumatic system for belt centering and tensioning.
- Belt speed and temperature are adjustable directly on control panel.
- Designed to dry both Plastisol and water-based inks.
- Powered by Gas or only by electricity.

Optionals

- Inlet and outlet extensions
- Outlet cooling system



Hot Air



Screen
Printing

Main Application: Screen Printing - Mass production

Configurations

Tunnel Length: 4000 - 6000 - 8000 - 10 000 mm

Belt Width: 1050 - 1550 - 1750 mm

Fahrenheit Gas 8180

Curing Area: 8000x1800 mm

Power consumption: 7,8 kw

Production: 800 pieces/h



Fahrenheit Electric 6160

Curing Area: 6000x1600 mm

Power consumption: 49 kw

Production: 600 pieces/h



Other configurations available: Fahrenheit Electric 6110 (6000x1100mm), Fahrenheit Electric 8160 (8000x1600mm), Fahrenheit Gas 10180 (10000x1800mm), etc.

| TECHNICAL DATA | ELECTRIC FAHRENHEIT 4110 | ELECTRIC FAHRENHEIT 6160 | GAS FAHRENHEIT 6180 | GAS FAHRENHEIT 8180 |
|------------------------------------|-----------------------------------|-----------------------------------|------------------------------------|------------------------------------|
| Electrical Requirements | 400V 3P+N+PE 38 A | 400V 3P+N+PE 75 A | 400V 3P+N+PE 17,5 A | 400V 3P+N+PE 22 A |
| Exhaust Specification | 600 m ³ /h Ø 300 mm | 800 m ³ /h Ø 300 mm | 2000 m ³ /h Ø 300 mm | 4000 m ³ /h Ø 300 mm |
| Power Consumption | 26 kw | 49 kw | 6,8 kw | 7,8 kw |
| Max Temperature | 180°C | 180°C | 180°C | 180°C |
| Belt Width [mm] | 1050 | 1550 | 1750 | 1750 |
| Tunnel Length [mm] | 4000 | 6000 | 6000 | 8000 |
| Production ¹ | 400 pieces/h | 600 pieces/h | 650 pieces/h | 800 pieces/h |
| Dimension ² (LxWxH)[mm] | 6000 x 1550 x 1620 | 9000 x 2300 x 1700 | 9000 x 2500 x 2350 | 11000 x 2500 x 2350 |
| Shipping Weight | 1200 kg | 2000 kg | 3000 kg | 3700 kg |

¹ Production of T-shirts with A4 print size - 3 minutes curing time

² Dimension and Weight can change accordingly to inlet/outlet extensions or installed options.

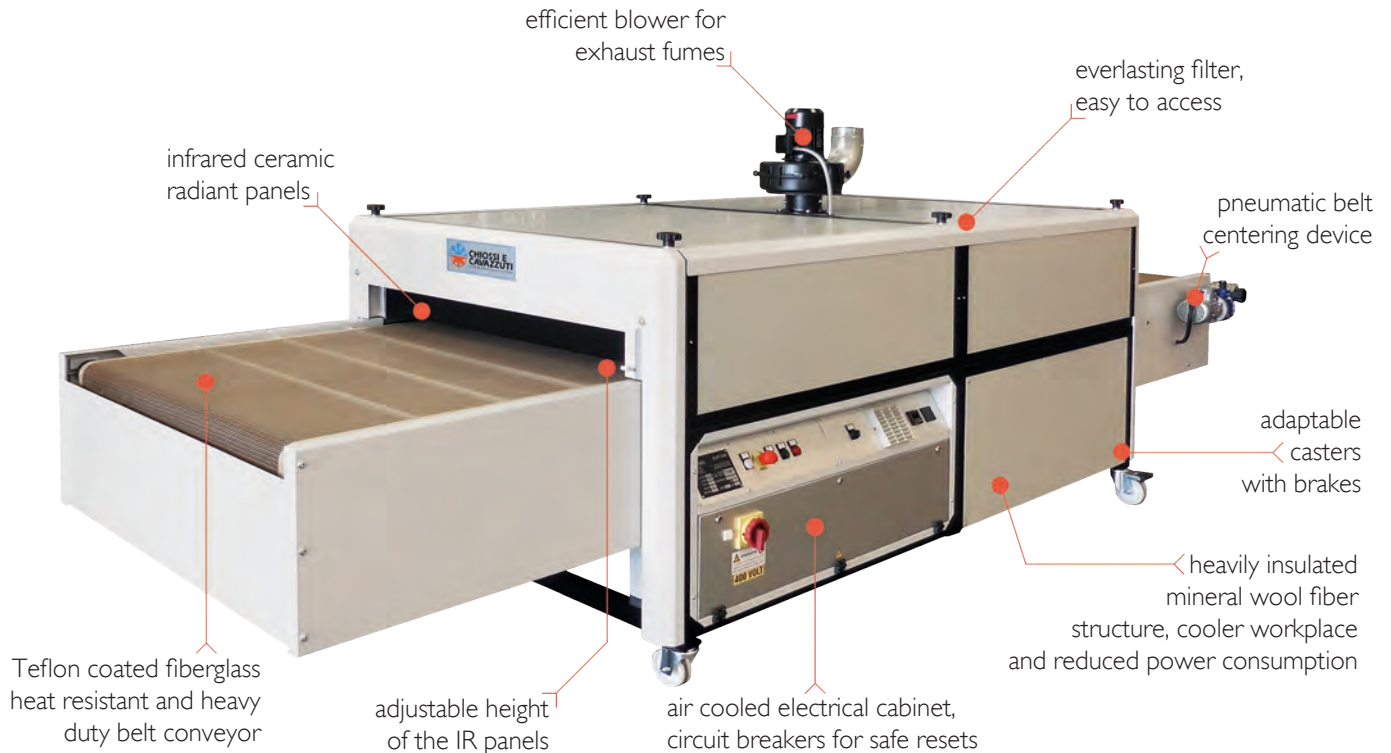


Infra Red



Forced Air
(optional)

Infra-Red Radiant Panels Dryers



Features

“Noir” is a high speed dryer designed to quickly cure Plastisol inks on fabrics.

- Precise electronic temperature regulator which acts directly on radiant panel temperature.
- High quality drying thanks to special radiant panels which no drying quality differences for light or dark colors.
- Perfect belt alignment thanks to an air-operated centering device and tensioning system that automatically compensates any stretch.
- Tunnel height can be adjusted to position the radiant panels at will to optimize drying performance.
- Cladding panels are perfectly insulated by adopting special technical measures and excellent quality materials.
- The outer surface always remains at ambient temperature, thereby reducing dispersion of heat.
- Provided with extraction fan for expulsion of exhaust fumes.

Optionals

- Forced air system to dry water-based inks
- Increase entrance height to 300mm
- Conveyor belt wide 1600mm
- Inlet and outlet extensions
- Outlet cooling system



Noir 3750 with combined IR / Air system and heating chamber height increased to 300mm



Infra Red



Forced Air
(optional)



Screen
Printing

Main Application: Screen Printing - Industrial production

Configurations

Noir 2500

Curing Area: 2500x1050 mm

Power: 15,5 kw

Production: 450 pieces/h



Noir 3750

Curing Area: 3750x1050 mm

Power: 20,5 kw

Production: 680 pieces/h



Noir 5000

Curing Area: 5000x1050 mm

Power: 32 kw

Production: 900 pieces/h



Other configurations are available on demand

| TECHNICAL DATA | NOIR 2500 | NOIR 3750 | NOIR 5000 |
|------------------------------------|-----------------------------------|-----------------------------------|------------------------------------|
| Electrical Requirements | 400V 3P+N+PE 25 A | 400V 3P+N+PE 31 A | 400V 3P+N+PE 50 A |
| Exhaust Specification | 600 m ³ /h Ø 125 mm | 600 m ³ /h Ø 125 mm | 1200 m ³ /h Ø 125 mm |
| Max Temperature (IR Panels) | 550°C | | |
| Power Consumption (max) | 15,5 kw | 20,5 kw | 32 kw |
| Belt Width [mm] | 1050 | 1050 | 1050 |
| Tunnel Length [mm] | 2500 | 3750 | 5000 |
| Production ¹ | 450 pieces/h | 680 pieces/h | 900 pieces/h |
| Dimension ² (LxWxH)[mm] | 4500 x 1380 x 1640 | 5750 x 1380 x 1640 | 7000 x 1380 x 1640 |
| Shipping Weight | 660 kg | 900 kg | 1200 kg |

¹ Production of T-shirts with A4 print size - 1,5 minutes curing time

² Dimension and Weight can change accordingly to inlet/outlet extensions or installed optionals.

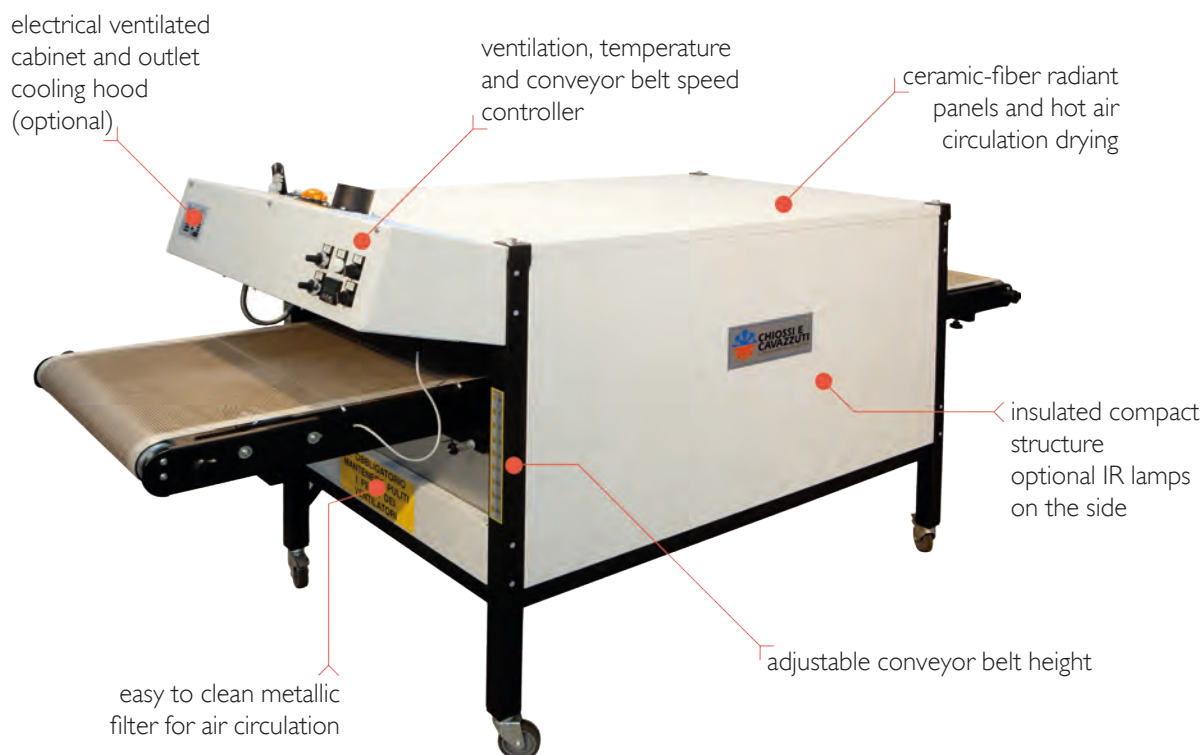


Infra Red



Forced Air

Compact Dryer with Radiant Panels and Hot Air



Features

“Piccolo” is a high quality product, designed to be fast and versatile.

- The dryer reaches the operating temperature in few minutes thanks to its compactness and well insulation.
- Three ceramic fiber radiant panels, combined with hot air circulation achieve great result with all kind of inks.
- Limited risk of damaging the fabrics with medium wave IR, which heats dark and light colors in the same way.
- The temperature can be regulated with precision, due to a sensor which measures the temperature on the radiating panel.
- The ventilation speed is adjustable, in order to uniform the temperature and respect delicate materials.
- Toothed track system to change the height of the tunnel in 9 position, ranging 20 to 260mm of distance from the radiant panels.
- It is provided with a cooling hood at the dryer outlet and extractor fan for the expulsion of exhaust fumes.
- A filter with stainless steel net, easy to remove and clean, protects the air mixing fan.
- A blow of fresh air cools the products going out of the tunnel and avoids that they deform or stick to one another (optional).

Optionals

- Outlet Cooling Hood
- Lateral infra-red lamps



Infra Red



Forced Air



Screen
Printing



Pad
Printing

Main Application: Screen Printing - Entry level



Advantages

- dry both Plastisol and water-based
- both radiant-panels and hot-air curing system
- precise temperature and ventilation control
- 9 conveyor belt distances, from 20mm to 260mm
- middle-waves radiations dry dark and light garment the same way
- provided with fumes extractor and metallic mesh filter
- a built-in draft tube extract ink fume and smell
- low consumption ideal for small business
- compact and lightweight structure
- unique and uniform air ventilation
- adaptable to many curing requirements



| TECHNICAL DATA | PICCOLO |
|--|-------------------------------|
| Electrical Requirements | 400V 3P+N+PE 11 A |
| Exhaust Specification | 200 m ³ /h Ø 80 mm |
| Max Temperature (IR Panels) | 500°C |
| Power Consumption (max) | 7,2 kw (3kw optional lamps) |
| Belt Width [mm] | 600 |
| Tunnel Length [mm] | 1500 |
| Production ¹ | 200 pieces/h |
| Dimension (LxWxH)[mm] | 2700 x 900 x 1220 |
| Shipping Weight | 200 kg |
| ¹ Production of T-shirts with A4 print size - 1,5 minutes curing time | |



Infra Red

Compact Dryer with IR ceramic heaters



Features

“Micro” is the most compact dryer to polymerize Plastisol inks on screen printed fabrics.

Suitable for laboratories, small companies and sampling usage due to its compact size and low consumption.

- Powered at 230V single-phase it can operate in any environment with a domestic electricity supply.
- Equipped with 4 ceramic heating elements with independent control.
- Considerably reduce required space when compared to other solutions.
- Infrared heating is very effective and allows to reduce overall consumption.
- The Dryer takes a few minutes to reach operating temperature.
- Thanks to the folding trolley and its low weight it can be transported on a normal car.
- The curing process can be adjusted by varying the belt speed, the distance of the ceramic elements and activating them individually



Infra Red

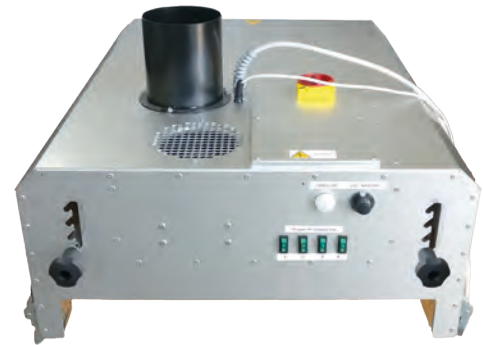


Screen
Printing

Main Application: Screen Printing - Entry level

Advantages

- small dimensions and low consumption
- independent ceramic heating elements
- easily disassembled with minimal maintenance
- fast start up and heating speed
- conveyor belt always centered in its guide
- distance from conveyor belt adjustable between 90 to 160 mm



Ceramic heating elements



Removable and foldable support

| TECHNICAL DATA | MICRO |
|--|----------------------|
| Electrical Requirements | 230V IP+N+PE 14 A |
| Exhaust Specification | Ø 150 mm |
| Power Consumption | 3,3 kw |
| Belt Width [mm] | 550 |
| Tunnel Length [mm] | 880 |
| Production ¹ | 80 pieces/h |
| Dimension (LxWxH)[mm] | 1250 x 690 x 1340 |
| Shipping Weight | 65 kg |
| ¹ Production of T-shirts with A4 print size - 1,5 minutes curing time | |

Yo-Yo

Sliding Flash Cure with low consumption for large areas

The YoYo is composed by a motor-operated base and a sliding radiant heater. It is the ideal choice for business enterprises where the current available is limited. YoYo operates with photocell, start pedal or start cable connected to the machine.

- The power can be adapted to avoid damage to delicate fabrics. The position of the radiant heater can be adjusted from the control panel and it works without mechanical limit switches.
- The speed of the slide is adjustable. The standard run of the radiator is 1000 or 1100 mm. It is possible to select between one, two or multiple drying run on the surface. The printed surface remains free in order to check the actual drying process.
- The powerful air circulation facilitates the drying of all kinds of ink. The printing tables are less stressed by heat, thus reducing the risk of deformation.



Optionals

- Photocell controller and foot switch
- Interchangeable Heaters size:
288mm (3kw) - 410mm (4,5kw) - 600mm (6kw) - 700mm (6kw) - 800mm (9kw)

Spot Easy / Spot Easy XL

Versatile Flash Cure for small areas with independent lamps

The Spot Easy is a high quality product designed to dry screen printed inks on fabrics to allow overprinting.

- With 9 medium wave Tungsten lamps and reflectors with optimized design, the inks dry fast and perfectly. Spot Easy XL version has 14 lamps with a total radiated area of 500x700mm.
- Flash Cure with thin design, versatile and perfect for small printed areas.
- The heating is carried out by "pulsar" type infra-red lamps which provide excellent results, ensure low consumption and long life.
- The risk to damage the material is minimized, thanks to the type of lamp used, which heats both light and dark inks indifferently.
- The lamps are switched-on by electronic components, without noise and wear, in order to operate only when required.
- Equipped with two fans to contribute to the drying process.

electronic controller
for each lamp



Optionals

- Photocell starting controller
- Photocell controller and foot switch



Infra Red



Screen Printing

Magic 25 / Magic 5000 / Magic 7000

Automatic Flash Cure with time and temperature control for automatic machines

This product is particularly suitable to operate with modern, automatic printing machines. It is very easy to use and guarantees low operating costs and an excellent performance.

- Quick start-up lamps vacuum-filled tungsten filaments, a special feature to improve lifetime and efficiency.
- Mechanical or electronic start that automatically notify the printing machine to be perfectly synchronized.
- The optical infrared thermometer reads the ink temperature instantly and stops the heating when the preset temperature has been reached, thus preventing the fabric from burning. If temperature control cannot be used, traditional timing control is still available.



Magic 25 can be installed directly on the printing machine and operate in synchrony

| TECHNICAL DATA | Yo-Yo 1000 | Yo-Yo 1100 |
|-------------------------------------|----------------------|----------------------|
| Electrical Requirements | 400V 3P+N+PE | 400V 3P+N+PE |
| Radiator Stroke [mm] | 1000 | 1100 |
| Working Height [mm] | 900 - 1157 (min-max) | 850 - 1050 (min-max) |
| Size (L x W x H ¹) [mm] | 1462 x 515 x 1340 | 1562 x 515 x 1340 |
| Shipping Weight | 44 kg | 50 kg |

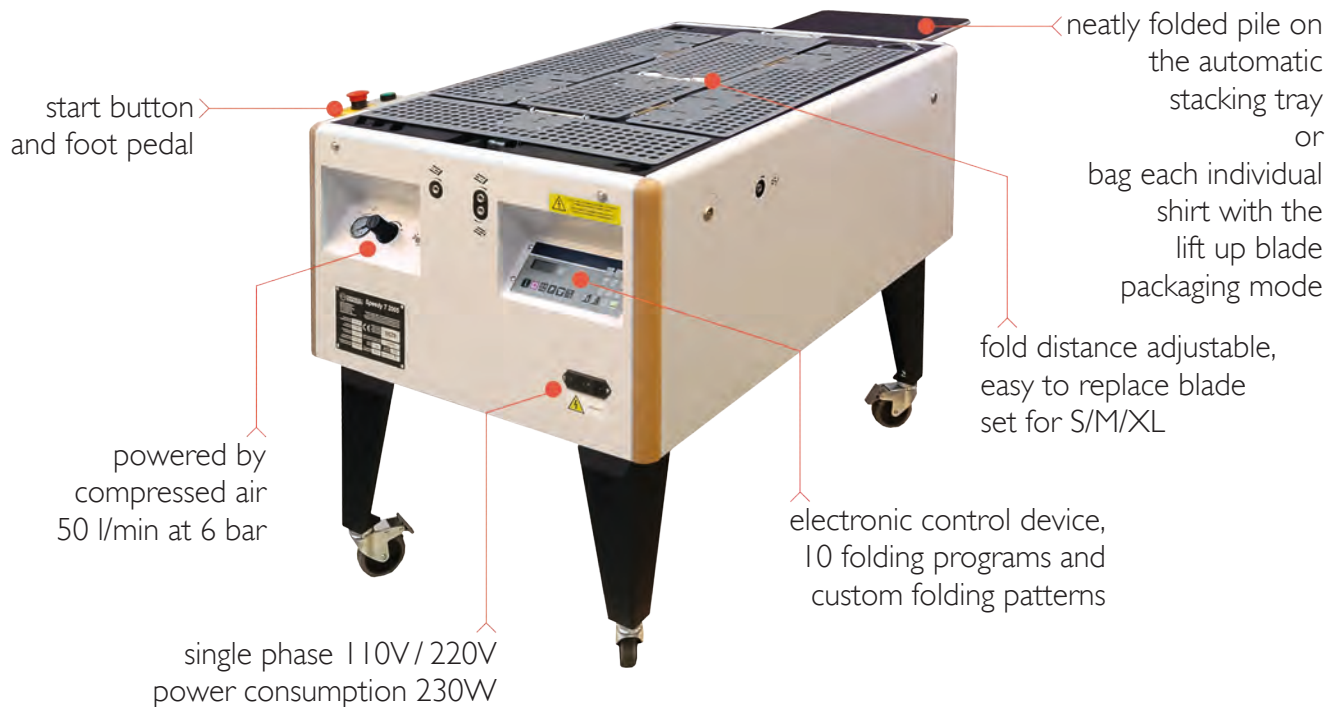
¹ Overall height may change accordingly to support adjustments

| TECHNICAL DATA | RADIATOR OPTIONS | | | | |
|---------------------|------------------|-------|-----|-----|-----|
| Radiator Width [mm] | 288 | 410 | 600 | 700 | 800 |
| Radiator Power [kW] | 3kW | 4,5kW | 6kW | 6kW | 9kW |

| TECHNICAL DATA | Magic 25 | Magic 5000 | Magic 7000 | Spot Easy | Spot Easy XL |
|-------------------------------------|-----------------|-------------------|-------------------|------------------|-------------------|
| Electrical Requirements | 400V 3P+N+PE | 400V 3P+N+PE | 400V 3P+N+PE | 400V 3P+N+PE | 400V 3P+N+PE |
| Power Consumption | 12 kw - 19A | 9 kw - 13 A | 13 kw - 19,5 A | 9 kw - 13 A | 16,8 kw - 26 A |
| Curing Area [mm] | 600x420 | 500x500 | 500x700 | 420x450 | 500x700 |
| Working Height [mm] | on printer | 815 - 1065 | 815 - 1065 | 905 - 1157 | 905 - 1157 |
| Number of Lamps | 12 | 9 | 9 | 9 | 14 |
| Size (L x W x H ¹) [mm] | 630 x 510 x 260 | 1038 x 520 x 1260 | 1238 x 520 x 1260 | 931 x 560 x 1250 | 1190 x 560 x 1250 |
| Shipping Weight | 18 kg | 50 kg | 55 kg | 43 kg | 53 kg |

¹ Overall height may change accordingly to support adjustments

Folding and Packaging Machine



Features

The Speedy-T is a semi-automatic folding and packaging machine.

This product is indispensable for a fast and uniform folding of T-shirts, sweaters, hoodies and other garments. The blades are interchangeable, very easy to adjust and adapt the fold to the required size, changing in few seconds the set-up from baby t-shirts to extra large sizes.

The factors of its success are a reliable fold quality combined with heavy-duty production capability. It can be adapted to suit all shapes and sizes available on the market.

Speedy-T can operate in two ways:

- **Stacking Mode:** each folded garment is placed on the stacker, which descends automatically; a photocell indicates when the stack is at maximum load and stops the machine.
- **Packaging Mode:** at the end of each work cycle the garment remains on the last blade, which is lifted up, and it can be easily packed in a bag.

The electronic control device features:

- 10 folding programs
- customization of folding programs
- self-diagnostics of anomalies and faults
- production counter and report when the preset number of pieces has been reached
- hourly production programming with acoustic signal for productions below minimum threshold setting



Stacker Mode with automatic photocell

Packaging Mode with ergonomic lifting blade



Easy to use with foot pedal or start button

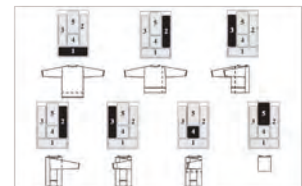
Adapt various blade size to garment requirements

Fold XS to XXL



Customize on demand folding programs

Automatic self diagnostic and production count



Detailed Specifications

| TECHNICAL DATA | SPEEDY-T |
|---------------------------|----------------------|
| Electrical Requirements | 230/110V IP+N+PE |
| Air Specification | 50 l/min - 6 bar |
| Power Consumption | 230W |
| Production with stacker | 500 pieces per hour |
| Production with packaging | 350 pieces per hour |
| Fold Size* (min/max) | 150x180 / 350x400 mm |
| Footprint Dimension | 1500x710xh815 mm |
| Shipping Weight | 90 kg |

* Fold size can be quickly adjusted by moving the rails or replacing the blades with the provided small/normal/extra large sets.

ROI vs. folding manually

Operator & flip board

- 275 folds per hour
- \$15 an hour
- \$0.55 spent per shirt

Operator & Machine

- 500 folds per hour
- \$15 an hour
- \$0.03 spent per shirt

- Saving per T-shirt = \$0.025
- Saving per Hour = \$12.50
- Monthly ROI (20 hours) = **\$250**

Profit on bagged garments

- Cost of poly bag = \$ 0.05 (average price)
- Cost of labor per = \$ 0.04 (350 shirts / \$15 h)
 - Sale price for bagging = \$ 0.25
 - Profit per t-shirt/bag = \$ 0.16
- Profit at 7000 shirts bagged a month (equal to 20 hours of operation) = **\$1120**

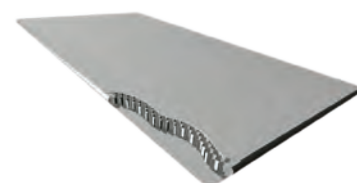
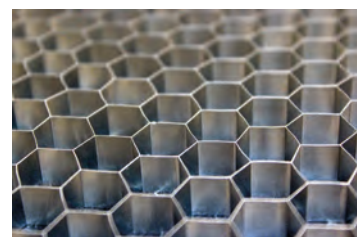
Honeycomb Aluminium Pallets “Alluplan”

The Alluplan pallet series are produced using aerospace quality materials with high mechanical and thermal resistance.

These printing tables are made of honeycomb lightweight aluminium resistant to solvents and heat up to 100 °C without undergoing deformation.

Thanks to the lightness of the Alluplan pallets, the rotary motion inertia of the machine is reduced, thus improving performance and increasing lifetime of the equipment.

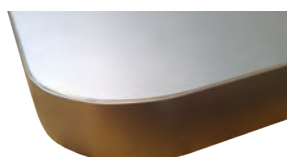
The pallets are also extremely easy to handle, compared to traditional ones, and make the assembly and disassembly processes easy to achieve with every printing machine.



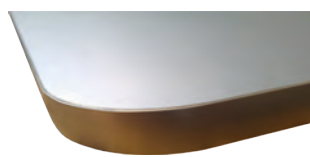
| TECHNICAL DATA | VALUES |
|---------------------------------|---|
| Dimension | On demand |
| Material | Honeycomb Aluminium |
| Specific Weight | 10 kg/m ² |
| Frame Material | Aluminium / grey PVC / black PVC |
| Thickness | 15 / 22 mm |
| Max Working Temperature | 100°C |
| Printing Machines Compatibility | Large range of fixing attachments for all kind of screen printing and digital machines (MHM, MR, ROQ, SCHENK, TEKIND, HEBBECKER, ANATOL, KORNIT, POLYPRINT, etc.) |

The material of the frame can be either aluminium or Pvc, to fulfill each specific production requirement.

Aluminium (22mm)



Aluminium (15mm)



Grey PVC (15mm)



Black PVC (15mm)





Screen Printing



DTG Printing

Main Application: Screen Printing and DTG

Pallets Made on Demand



The printing pallets you need: choose the shape, size, thickness and fittings for your printing machine.



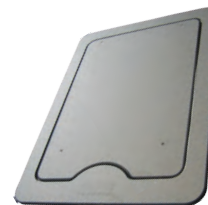
Made according to Customer requirements in order to guarantee better adaptability of the surfaces to the type of job required.



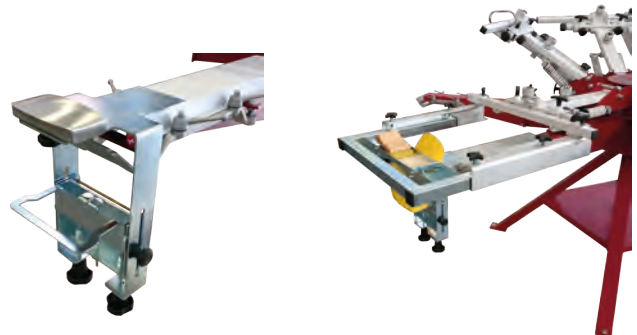
Large range of fittings for every brand of printing machines, both screen and digital.



Printing pallets for digital printing machines, provided with garment locking frame



Manual Printing Machine Accessory:
The Printing pallet "CAPS" is specifically designed to screen print on curved objects like caps or bags. It can be micro adjusted on the base of the pallet and the frame. A spring tensor tighten the product to achieve the highest print quality.
Printing Area: 150x90mm



40 YEARS OF HISTORY

Reliability, Consistency and Sustainability since 1979

THE PAST EXPERIENCE

Chiossi e Cavazzuti was founded in 1979 at Carpi (Modena).

At the beginning only three people were working in the company.

In 1988 the Company moved to Rio Saliceto (RE) in a 1700m² building, to satisfy a constant production growth.

The high demand of reliable machinery for the textile sector in the area, led the Company to become the most acclaimed manufacturer of textile drying equipment across all Italy.

After 40 years of activity the Company counts more that 25 employees and have built a wide net of suppliers and distributors.

THE PRESENT AND FUTURE CHALLENGES

In the last decade the Company greatly invested in technological machinery and qualified personnel while employees number steadily increases every year.

In 2007, the Company settled to a modern industrial building of 3000m² in Correggio, to fulfill the growing logistic and production requirements.

In 2016 the website www.chiossicavazzuti.com, which counts hundreds of new visitors daily, has been completely redesigned and optimized.

In 2020 the warehouse and production facility has been renewed and updated to bring forward the latest industrial innovations.

Today, the Company maintains close contact with those whose activities revolve around Chiossi e Cavazzuti's machines and handles the after-sales service directly.

Chiossi e Cavazzuti is a renowned brand, synonym of Reliability in the national and international market, with over 7,000 satisfied customers, 20 Italian and 40 international distributors.

Date of foundation: 1979



Relocation in 1988



Moved to current Factory in 2007



WHERE WE ARE

Chiossi e Cavazzuti Dealer Location



INDUSTRIAL QUALITY

Manufactured by Experts of the Sector



PRODUCTION IN ITALY

Our Company is located in the heart of the Emilia region, the Italian “Motor Valley”.

This strategic location has led to a strong net of partnerships and constant contact with our Suppliers and Collaborators.

We design, build and test every machine in our Factory. Quality checks of each component and manufacturing process are the core of the Production Policy.

Clean solar energy and air filtration systems have been implemented to respect the environment and follow our idea of sustainability.

PRODUCTION POLICY

Each step of the production process is carried out in Italy, using only Italian and European components, according to the highest safety and quality standards.

Every machine is handcrafted with experience, skills and passion by our specialized staff, the majority of which has a decades-long experience in our Company.

Meticulous controls and test are performed prior international or national shipments.





Chiossi e Cavazzuti
production factory,
logistic and sales offices,
sited in Correggio (RE) Italy.

Each step of the manufacturing
process is carried out in Italy,
with Italian and European
components, according to
the highest safety and quality
standards.



The Company was founded in 1979 as a producer of dryers
(paper, glass, PVC sheets and textile) and it soon branched out
into all that concerns the printing industry.



CHIOSSI E CAVAZZUTI S.R.L.

Via Costituzione 50/D - 42015 Correggio (RE) Italy

P.iva 01357650355 - C.f. 00863610366

Tel: +39 0522 637224 - Fax: +39 0522 631180

Email: cc@chiossiecavazzuti.com



WWW.CHIOSSIECAVAZZUTI.COM

visit our website to see the complete range of products and request an offer