



# UNLIMITED CREATION

## APPLICATION INSTRUCTIONS

# Glitter

Let your artworks glitter with sparkles and lights using our heat transfer glitter films.  
Remarkable easy cutting and weeding and beautiful shiny colors.

### FEATURES:



**Polyester  
Glitter**



**350µ**



**Cotton, polyester,  
blended fabrics..**  
Less suitable for nylon  
and other coated textiles.



**40°C**



**1.** Cut mirrored

### CUTTING CONDITIONS:



**Blade  
45 - 60°**



**medium/  
high**



**10 - 20 cm/s**



**2.** Weed design

### TRANSFER CONDITIONS:



**155°C**



**10 s**



**medium/  
high**



**Hot peel**



**3.** Transfer design

### ► PACKAGING



**50 cm**



**25 m**



**4.** Remove liner, done !

Store in a cool and dry place; protect against the influence of light when stored. We recommend not to exceed a storage period of 12 months. The technical specifications rest on extensive tests and technical research. Due to the variety of possible influences during refinement, and use, the specifications should be viewed as reference values. We recommend a suitability test on the original material. A legally binding warranty of specific characteristics cannot be derived from our specifications.

**S E F • 110 BD DENIS-PAPIN 53000 LAVAL – FRANCE**  
**TEL. +33 2. 43 53 36 48      FAX +33 2. 43 67 11 78**  
**www.seftextile.com E-mail: contact@sef-france.com**  
**SAS. CAPITAL € 945 000 RCS, LAVAL 304.802.291.00027**



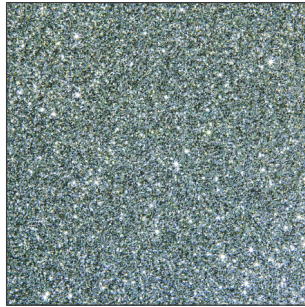


## AVAILABLE COLORS

### Glitter



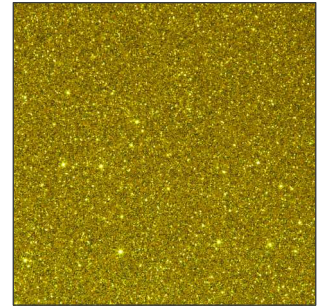
WHITE 04



SILVER 02



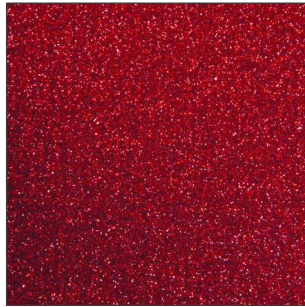
VINTAGE GOLD 12



GOLD 01



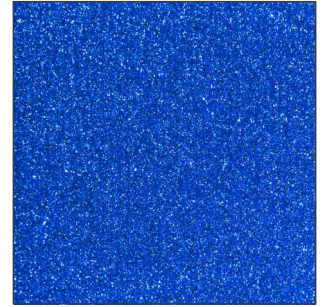
ORANGE 07



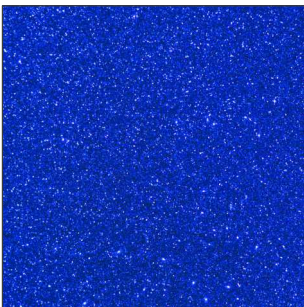
RED 05



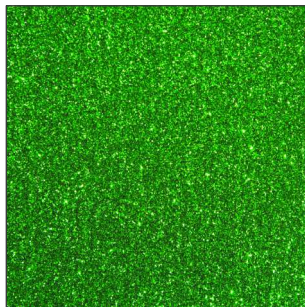
PINK 09



BLUE 11



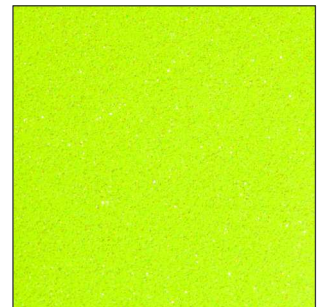
ROYAL BLUE 10



GREEN 10



BLACK 03



NEON YELLOW 08

Store in a cool and dry place; protect against the influence of light when stored. We recommend not to exceed a storage period of 12 months. The technical specifications rest on extensive tests and technical research. Due to the variety of possible influences during refinement, and use, the specifications should be viewed as reference values. We recommend a suitability test on the original material. A legally binding warranty of specific characteristics cannot be derived from our specifications.