



# UNLIMITED CREATION

## APPLICATION INSTRUCTIONS

# Dainel AC-R

Dainel AC-R is a self-adhesive flock film. It can be used to create self-adhesive motifs or wall decorations with an incomparable surface.

Flock surfaces are reflection-free and are known for their soft, pleasant surface.

### FEATURES:



Viscose  
flock fibers



450µ



Silicone paper



6,5 - 10,6 N/cm  
after 20min, stainless steel

### CUTTING CONDITIONS:



Blade  
45 - 60°



low/  
medium



30 - 40 cm/s

### REMARK:

Recommended transfer tape: FlockTape

Connected designs can also be transferred without tape. Dainel AC-R has a medium tac and can be removed from most surfaces within 6 months without residue.

### ► PACKAGING



50 cm



10 m



1. Cut right reading



2. Weed design



3. Apply tape



4. Apply design,  
remove tape, done!

Store in a cool and dry place; protect against the influence of light when stored. We recommend not to exceed a storage period of 12 months. The technical specifications rest on extensive tests and technical research. Due to the variety of possible influences during refinement, and use, the specifications should be viewed as reference values. We recommend a suitability test on the original material. A legally binding warranty of specific characteristics cannot be derived from our specifications.

SEF • 110 BD DENIS-PAPIN 53000 LAVAL – FRANCE  
TEL. +33 2. 43 53 36 48 FAX +33 2. 43 67 11 78  
www.seftextile.com E-mail: contact@sef-france.com  
SAS. CAPITAL € 945 000 RCS, LAVAL 304.802.291.00027





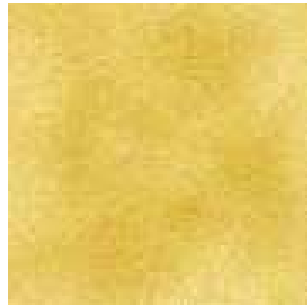
# UNLIMITED CREATION

## AVAILABLE COLORS

# Dainel AC-R



WHITE (FIBERSTIC)



DUNE 02



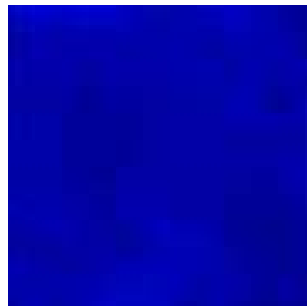
TOMATE 16



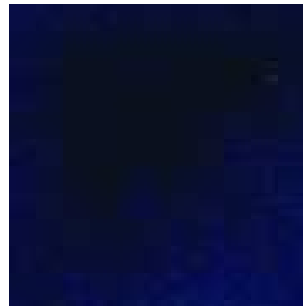
BORDEAUX 12



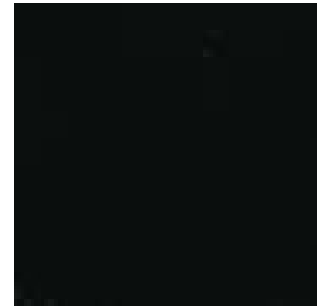
FOREST 125



IRIS 127



NAVY 151



CHARBON 14

Additional 35 colours from the Dainel series from a minimum order of 20 rolls.

Store in a cool and dry place; protect against the influence of light when stored. We recommend not to exceed a storage period of 12 months. The technical specifications rest on extensive tests and technical research. Due to the variety of possible influences during refinement, and use, the specifications should be viewed as reference values. We recommend a suitability test on the original material. A legally binding warranty of specific characteristics cannot be derived from our specifications.

**S E F • 110 BD DENIS-PAPIN 53000 LAVAL – FRANCE**  
**TEL. +33 2. 43 53 36 48      FAX +33 2. 43 67 11 78**  
**www.seftextile.com E-mail: contact@sef-france.com**  
**SAS. CAPITAL € 945 000 RCS, LAVAL 304.802.291.00027**

