



# UNLIMITED CREATION

## APPLICATION INSTRUCTIONS

# CrazyFlex

16 crazy patterns incredibly easy to cut and weed.  
Naturally made of 100% water-based PU.

### FEATURES:



**PU  
water-  
based**



**60µ**



**Cotton, polyester,  
blended fabrics..**  
Less suitable for nylon  
and other coated textiles.



**60°C**

### CUTTING CONDITIONS:



**Blade  
30 - 45°**



**low/  
medium**



**30 - 40 cm/s**

### TRANSFER CONDITIONS:



**165°C**



**17 s**



**medium/  
high**



**Hot peel**

**Flex on Flex possible**

### ► PACKAGING



50 cm

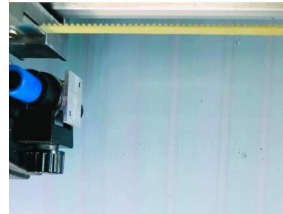
25 m

50 cm

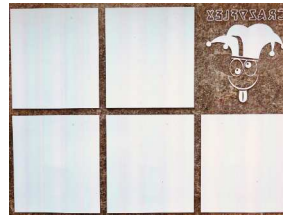
10 m

50 cm

5 m



**1.** Cut mirrored



**2.** Weed design



**3.** Transfer design



**4.** Remove liner, done !

Store in a cool and dry place; protect against the influence of light when stored. We recommend not to exceed a storage period of 18 months. The technical specifications rest on extensive tests and technical research. Due to the variety of possible influences during refinement, and use, the specifications should be viewed as reference values. We recommend a suitability test on the original material. A legally binding warranty of specific characteristics cannot be derived from our specifications.

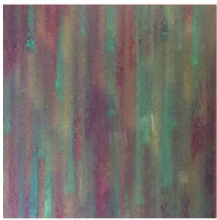
**SEF • 110 BD DENIS-PAPIN 53000 LAVAL – FRANCE**  
**TEL. +33 2. 43 53 36 48      FAX +33 2. 43 67 11 78**  
**www.seftextile.com E-mail: contact@sef-france.com**  
**SAS. CAPITAL € 945 000 RCS, LAVAL 304.802.291.00027**



## AVAILABLE COLORS

# CrazyFlex

### CrazyFlex Haze



PATILLA 01



PURPLE HAZE 02



MACHA 03



JUPITER 04



SILVERMOON 05



HARLEQUIN 06



INDIAN SUNRISE 07

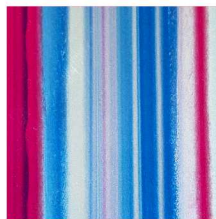


BLUE LAGOON 08

### CrazyFlex Stripes



CANDY STORE 09



SUNSET BVD 10



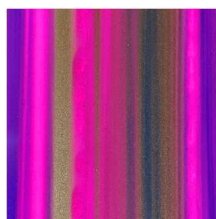
PHOTON 11



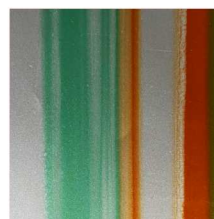
DAYDREAM 12



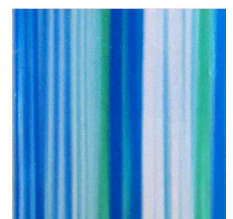
QUANTUM 13



TAHITI 14



WONDERLAND 15



BLUE MINT 16

Store in a cool and dry place; protect against the influence of light when stored. We recommend not to exceed a storage period of 18 months. The technical specifications rest on extensive tests and technical research. Due to the variety of possible influences during refinement, and use, the specifications should be viewed as reference values. We recommend a suitability test on the original material. A legally binding warranty of specific characteristics cannot be derived from our specifications.