

10480TFXPUFF Epic TFX Puff Base

Wilflex™ Epic TFX Puff Base is used to produce multi-dimensional graphics, either as an all-in-one puff ink or as an underprint to the standard Epic Transflex hot-split inks. Epic TFX Puff Base creates a suede or embossed puff effect. Epic TFX Puff Base can be used on it's own or in combination with PCs, or a white ink.

Highlights

- ▶ Create special effects, textures.
- ▶ Use as an underprint to create embossed effects.
- ▶ Epic TFX Puff Base can be used on it's own or as a back-up ink to any Epic Transflex inks.
- ▶ Produces soft, durable transfers.

Printing Tips

- ▶ Adjustments to the drying mechanism may be required as the variables of different drying (heat) types, length of dryer conveyor and drying units, will affect the overall transfer finish.
- ▶ The majority of standard transfer papers can be used with confidence. If a softer-feel transfer is required, an uncoated transfer paper is recommended. In most cases, a hot-split/hot-peel transfer paper will be required.
- ▶ Pretest all fabrics for desired properties before beginning production printing.

Compliance

- ▶ Non-phthalate.
- ▶ For individual compliance certifications, please visit www.wilflex.com/compliance.

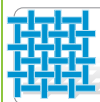
Precautions

- ▶ Perform fusion tests before production. Failure to cure ink properly may result in poor wash fastness, inferior adhesion and unacceptable durability. Ink gel and cure temperatures should be measured using a Thermoprobe placed directly in the wet ink film and verified on the production run substrate(s) and production equipment. It is the responsibility of the printer to determine that the correct ink has been selected for a specific substrate and the application processes meet your customer's standards or specifications.
- ▶ Pretest all fabrics for desired properties before beginning production printing. / Turn the garment inside-out when washing and drying to keep the transfer looking its best.
- ▶ Examine the fabric type and color before and after the application of the transfer, as color distortion may occur due to the introduction of heat to sensitive fabric types and dyestuffs inherent in the garment.
- ▶ It is advisable to press the blank shirt under transfer press before applying transfer to reduce moisture in garment.
- ▶ Stir plastisols before printing.
- ▶ Do not dry clean, bleach or iron printed area.
- ▶ **NON-CONTAMINATION OF EPIC INKS:** Do not add or mix non-Epic inks, additives or extenders with Epic inks. All buckets, palette knives, stirring apparatus, squeegees, flood bars and screens must be cleaned properly and free of phthalates and pvc containing inks. Non-phthalate emulsions and pallet adhesives must be used. Failure to follow these precautions may cause phthalate contamination in violation of consumer protection laws and regulations.
- ▶ Any application not referred in this product information bulletin should be pre-tested or consultation sought with Wilflex Technical Services Department prior to printing.
- ▶ Email: techserviceswilflex@polyone.com



Fabric Types

100% cotton, cotton blends, rayon, and linen.



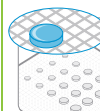
Mesh

Counts: 60-86 t/in (24-34 t/cm)
Tension: 25-35 n/cm²



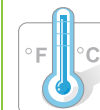
Squeegee

Durometer: 60-80
Edge: Hard, Square
Stroke: Hard flood, Slow speed
**Do not use excess squeegee pressure.*



Non-Phthalate Stencil

Direct: 2 over 2
Capillary/Thick Film: 200-400 microns
Off Contact: 1/16" (.2 cm)



Flash & Cure Temperatures

Flash: 160°F (70°C)
Cure: 320°F (160°C)
Transfer: 375°F (190°C)



Pigment Loading

EQ: N/A
MX: N/A
PC: 20% max. *Excessive amounts will reduce puff height.
**All percentages listed at % by weight.*



Epic Additives

Extender: N/A
Reducer: N/A
**All percentages listed at % by weight.*



Storage

65-90°F (18-32°C)
Avoid direct sunlight.
Use within one year of receipt.



Clean Up

Ink degradant or press wash.



Health & Safety

MSDS: www.polyone.com or
Contact your local CSR.