

- e** 10344PFXREF Epic Imagebrite Ref Base
- 14295PFXREF Epic Imagebrite Mid Gray Ref
- 19000PFXREF Epic Imagebrite Black Ref
- 14298PFXREF Epic Imagebrite Dk. Gray Ref
- 15325PFXREF Epic Imagebrite Met Plat Ref

Wilflex™ Epic ImageBrite Base and Colors are non-phthalate reflective inks formulated for direct printing on textiles. Epic ImageBrite Base is non-pigmented/non-colored. Add PCs up to 6% by weight to create custom colors.

Highlights

- ▶ State-of-the-art reflectivity on light and dark grounds.
- ▶ Can be used for high-visibility clothing and fashion graphics.
- ▶ Excellent adhesion to fabrics.
- ▶ Prints easily through recommended meshes.
- ▶ Super post-wash reflective response.
- ▶ For use with safety and fashion design concepts.

Printing Tips

- ▶ To produce reflective colors, add up to 6% by weight of Epic PCs to the ImageBrite base. When adding pigment concentrates to 10344PFXREF ImageBrite Base, it is recommended to mix only what is needed for the print application. Increased viscosity in the mixed ink may occur in the short term. Not all PC's are recommended. See Precautions.
- ▶ Do not print reflective inks on an underbase as the reflectivity will be greatly diminished.
- ▶ Print-flash-print application not recommended.
- ▶ Reflective colors work well on dark fabrics, but will not be highly saturated. The color under normal lighting may vary with substrate color.
- ▶ To print a block graphic design on dark fabrics, the printer may print the inside of the design with a reflective ink and outline with another reflective color or a non-reflective ink.

Compliance

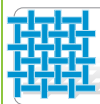
- ▶ Non-phthalate.
- ▶ For individual compliance certifications, please visit www.wilflex.com/compliance.

Precautions

- ▶ Perform fusion tests before production. Failure to cure ink properly may result in poor wash fastness, inferior adhesion and unacceptable durability. Ink gel and cure temperatures should be measured using a Thermoprobe placed directly in the wet ink film and verified on the production run substrate(s) and production equipment. It is the responsibility of the printer to determine that the correct ink has been selected for a specific substrate and the application processes meet your customer's standards or specifications.
- ▶ Some pigment concentrates should NOT be used with ImageBrite base. These include: 61045PC Epic Maroon, 61057PC Epic Violet, 61070PC Epic Green, 61040PC Epic Red, 61068PC Epic Blue, 61130PC Epic Bright Orange.
- ▶ Reflective and wash properties may be compromised by adding products other than those recommended.
- ▶ Reducing viscosity will adversely affect opacity.
- ▶ Stir plastisols before printing.
- ▶ Do not dry clean, bleach or iron printed area.
- ▶ **NON-CONTAMINATION OF EPIC INKS:** Do not add or mix non-Epic inks, additives or extenders with Epic inks. All buckets, palette knives, stirring apparatus, squeegees, flood bars and screens must be cleaned properly and free of phthalates and pvc containing inks. Non-phthalate emulsions and pallet adhesives must be used. Failure to follow these precautions may cause phthalate contamination in violation of consumer protection laws and regulations.
- ▶ Any application not referred in this product information bulletin should be pre-tested or consultation sought with Wilflex Technical Services Department prior to printing.
- ▶ Email: techserviceswilflex@polyone.com



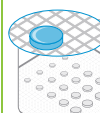
Fabric Types
100% cotton, cotton blends, some synthetics./ *Do not print on nylon.



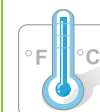
Mesh
Counts: 110-158 t/in (43-62 t/cm)
Tension: 25-35 n/cm²



Squeegee
Durometer: 60-70, 70/90/70
Edge: Square, Sharp
Stroke: Medium
**Do not use excess squeegee pressure.*



Non-Phthalate Stencil
Direct: 2 over 2
Capillary/Thick Film: N/A
Off Contact: 1/16" (.2cm)



Flash & Cure Temperatures
Flash: 160°F-180 (70-82°C)
Cure: 340-350°F (171-177°C)
Entire Film



Pigment Loading
EQ: 5% max
MX: 5% max
PC: 5% max
**All percentages listed at % by weight.*



Epic Additives
Extender: N/A
Reducer: Epic Viscosity Buster-1% max
**All percentages listed at % by weight.*



Storage
65-90°F (18-32°C)
Avoid direct sunlight.
Use within one year of receipt.



Clean Up
Ink degradent or press wash.



Health & Safety
MSDS: www.polyone.com or
Contact your local CSR.