

10012PFXPB Epic Particle Base

Wilflex™ Epic Particle Base is a non-phthalate crystal clear ink specifically designed for use with poly-flake glitters and other particles. It can also be utilized as a stand-alone clear or base, and as a soft hand extender.

Highlights

- ▶ Excellent clarity.
- ▶ Optimized for a maximum optical flash when used as a metallic carrier.
- ▶ Can be mixed with Epic PCs and Epic EQs to create custom colors.

Printing Tips

- ▶ When using glitter particle, it is recommended to use particle size .008" x .008".
- ▶ Be sure to completely disperse the glitter particle.
- ▶ Use a heavy flood stroke and then light squeegee pressure to print Epic Particle Base and glitter particle ink onto the garment.
- ▶ Check the cure temperature at the ink surface.

Compliance

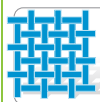
- ▶ Non-phthalate.
- ▶ For individual compliance certifications, please visit www.wilflex.com/compliance.

Precautions

- ▶ Perform fusion tests before production. Failure to cure ink properly may result in poor wash fastness, inferior adhesion and unacceptable durability. Ink gel and cure temperatures should be measured using a Thermoprobe placed directly in the wet ink film and verified on the production run substrate(s) and production equipment. It is the responsibility of the printer to determine that the correct ink has been selected for a specific substrate and the application processes meet your customer's standards or specifications.
- ▶ Epic Particle Base is not recommended for mixing shimmer or metallic inks.
- ▶ Pretest all fabrics for dye migration.
- ▶ Stir plastisols before printing.
- ▶ Do not dry clean, bleach or iron printed area.
- ▶ **NON-CONTAMINATION OF EPIC INKS:** Do not add or mix non-Epic inks, additives or extenders with Epic inks. All buckets, palette knives, stirring apparatus, squeegees, flood bars and screens must be cleaned properly and free of phthalates and pvc containing inks. Non-phthalate emulsions and pallet adhesives must be used. Failure to follow these precautions may cause phthalate contamination in violation of consumer protection laws and regulations.
- ▶ Any application not referred in this product information bulletin should be pre-tested or consultation sought with Wilflex Technical Services Department prior to printing.
- ▶ Email: techserviceswilflex@polyone.com



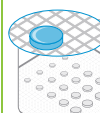
Fabric Types
100% cotton, cotton blends, polyester



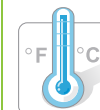
Mesh
Counts: 24-38 t/in (9-15 t/cm)
Tension: 25-35 n/cm²



Squeegee
Durometer: 60/90/60
Edge: Square, Sharp
Stroke: Medium
**Do not use excess squeegee pressure.*



Non-Phthalate Stencil
Direct: 2 over 2
Capillary/Thick Film: 200-400+ microns
Off Contact: 1/16" (.2cm)



Flash & Cure Temperatures
Flash: 160°F (70°C)
Cure: 320°F (160°C)



Pigment Loading
EQ: 5% max
MX: 5% max
PC: 5% max
**All percentages listed at % by weight.*



Epic Additives
Extender: N/A
Reducer: N/A
**All percentages listed at % by weight.*



Storage
65-90°F (18-32°C)
Avoid direct sunlight.
Use within one year of receipt.



Clean Up
Ink degradent or press wash.



Health & Safety
MSDS: www.polyone.com or
Contact your local CSR.